

# FIRE RATED ACCESS PANEL

## 4hr fire rated wall access panel

### DESCRIPTION

Hinged or screw fixed wall access panel suitable for installation in masonry walls with a pressed metal frame or Tsection frame, with a -/240/60 or -/240/120 fire rating.

### APPLICATIONS

Shops, offices, apartments, factories and any application where access needs to be achieved through a fire rated wall.

### FEATURES

- Insulated for 60 or 120 minutes
- Ply facing
- Suitable for masonry or concrete walls
- Screw fixed at 500mm centres on all sides, or hinged with budget locks at 500mm centres on lock side
- 48mm or 73mm thick
- Hot smoke seals included. Medium smoke seals and acoustic seals available (optional)
- Standard 4 sided pressed metal door frame with 25mm doorstops available in a variety of profiles (see fire rated frame profiles), or
- T-Section frame available (screw-fix only) comprised of 2 welded 25mm x 25mm x 3mm steel angles
- Single leaf configurations only

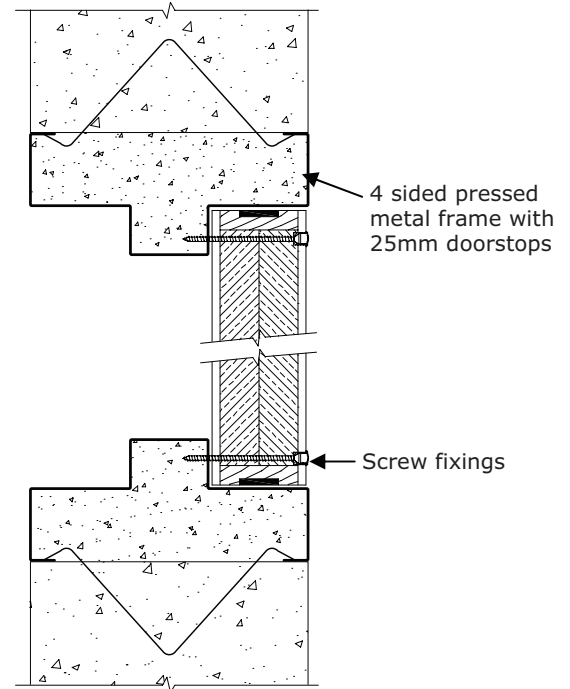
### MODELS

| Model        | FRL       | Thickness (mm) | Max Size (mm) |
|--------------|-----------|----------------|---------------|
| PWAP-240/60  | -/240/60  | 48             | 2400 x 1000   |
| PWAP-240/120 | -/240/120 | 73             | 2400 x 1000   |

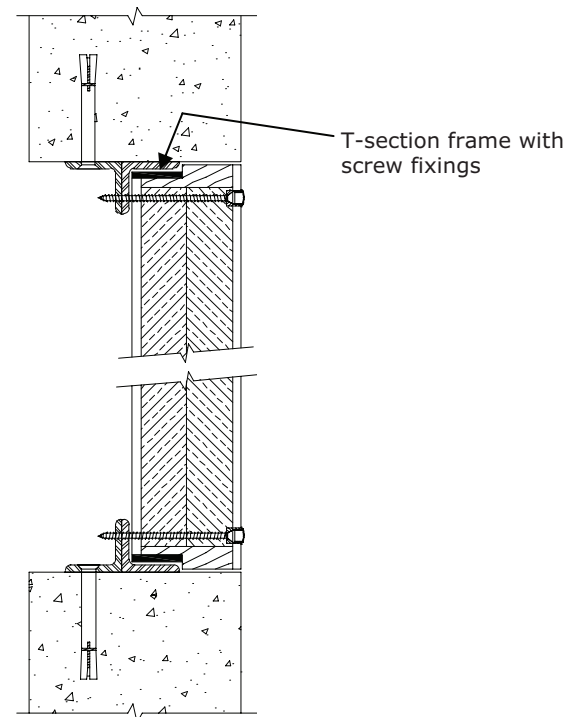
### HOW TO SPECIFY

"Eg. Access panel to be a Pyropanel fire rated wall access panel PWAP-240/60\*, 48mm\* thick, -/240/60\*, Ply face, screw fixings"

\* denotes example - delete, change or specify as required



Wall panel with pressed metal door frame



Wall panel with T-Section frame

### Pyropanel Developments Pty Ltd

235 Huntingdale Road, Oakleigh, Vic 3166

Ph: (03) 9837 8500 Fax: (03) 9837 8550

Email: [sales@pyropanel.com.au](mailto:sales@pyropanel.com.au)

Web: [www.pyropanel.com.au](http://www.pyropanel.com.au)

### Distributed by: