

FIRE RATED GLAZING

Pyrostop -/120/120 fire window

DESCRIPTION

Insulated steel framed fire rated window providing 120 minutes Integrity and 120 minutes of Insulation protection with perfectly clear Pilkington Pyrostop™ insulating glass. This system is a great solution for applications requiring certified fire resistance for both Integrity and Insulation and the added safety benefit of radiation protection.

APPLICATIONS

Fire escapes, smoke lobbies, computer rooms, car parks and factories, boundary walls, or wherever there is a need for Integrity and Insulation fire protection, with the need to protect the building and occupants against the spread of fire due to radiant heat transmission.

FEATURES

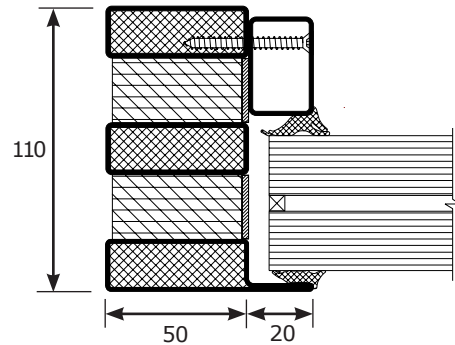
- Fully certified to Australian Standards AS1530.4
- /120/120 FRL using 52mm Pilkington Pyrostop™ for internal applications, and 56mm for external applications
- Reduces radiant heat transmission by over 98%
- Internal and External applications
- Very high light transmission value
- Forster® insulated framing system
- Class A impact rated to AS2208
- Single or Multiple panes up to 2400mm(h) x 1415mm(w) or 1415mm (h) x 2400mm (w), [2516mm (h) x 1531mm (w) or 1531mm (h) x 2516mm (w) overall frame size] **(recommended max size: 1.5m² due to weight of system - Larger sizes are available upon request, however highly specialised lifting and glazing equipment will be required)**
- Arched windows
- Standard finish is Prime Painted, ready for undercoating and top coat

OPTIONAL EXTRAS

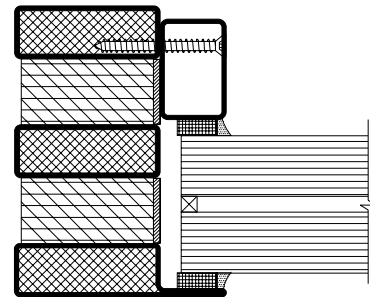
- Powdercoating

MODELS AVAILABLE

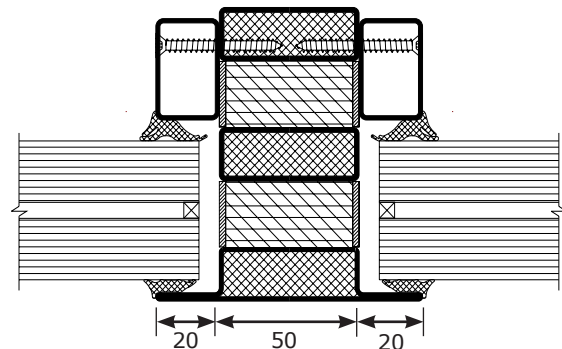
Model	FRL	Glass Thickness	Max Pane Size
PFWS-PS120/120	-/120/120	52 or 56mm	2400(h) x 1415mm(w) or 1415(h) x 2400mm(h)



Standard profile with rubber beading (internal application)



Standard profile with silicone beading (internal or external application)



Standard mullion and transom profile

HOW TO SPECIFY

Eg, "Window to be Pyropanel Fire Window **PFWS-PS120/120**, -/120/120 FRL, incorporating Forster® insulated steel frame and 52/56mm* Pilkington Pyrostop™ clear intumescent glass, with rubber beading / silicone weather seal*. System available from Pyropanel Developments".

* denotes example - delete, change or specify as required

Pyropanel Developments Pty Ltd
235 Huntingdale Road, Oakleigh, Vic 3166
Ph: **(03) 9837 8500** Fax: (03) 9837 8550
Email: **sales@pyropanel.com.au**
Web: **www.pyropanel.com.au**

Distributed by:

FIRE RATED GLAZING

Pyrostop -/120/120 fire window

GLASS DATA

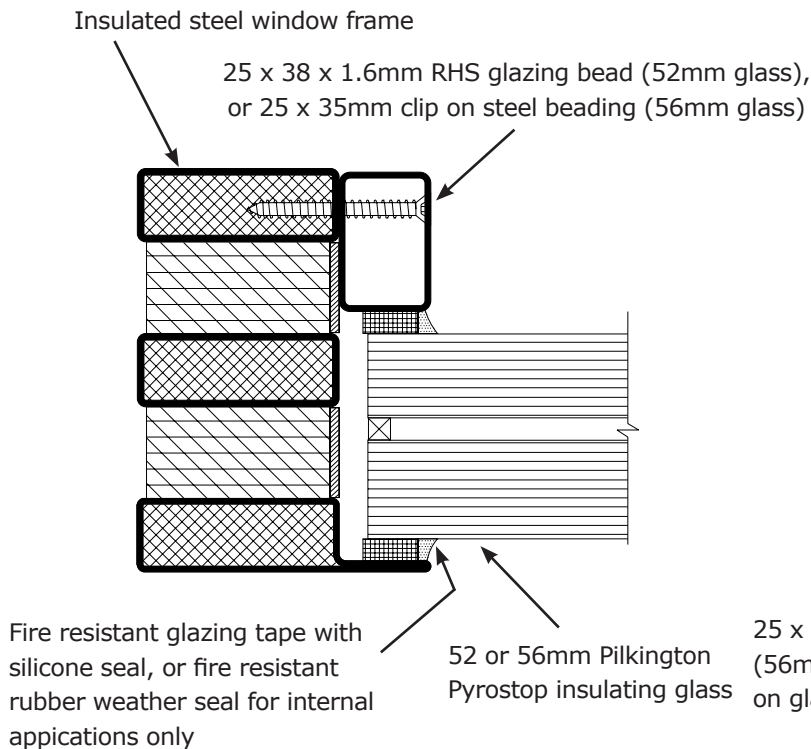
Product	Nominal Thickness (mm)	Application	Integrity (mins)	Insulation (mins)	Sound Reduction** (db)	Light transmission %	U-Value (W/m ² k)	Approx weight of glass (kg/m ²)	Approx weight of glass and frame (kg/m ²)
Pyrostop™	52 IGU (23+6+23)	Internal	120	120	42	78	2.8	106	130
Pyrostop™	56 IGU (27+6+23)	Internal / External	120	120	47	77	2.8	125	150

SYSTEM DETAILS
Standard system

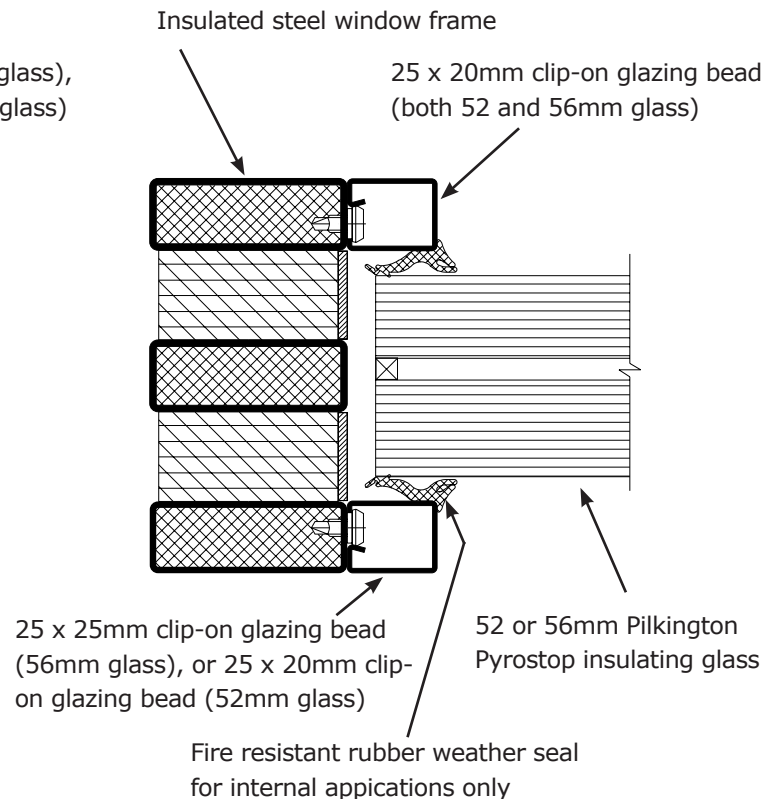
- Offset glazing
- Silicone weather sealing for internal or external applications (wet glazing), or optional rubber weather stripping for internal applications only (dry glazing)

Optional glazing system

- Centre glazing
- Silicone sealing for internal applications only (wet glazing), or optional rubber weather stripping for internal application only (dry glazing)
- Frame profile may require extended lead times



**Standard offset glazing profile
(internal or external application)**



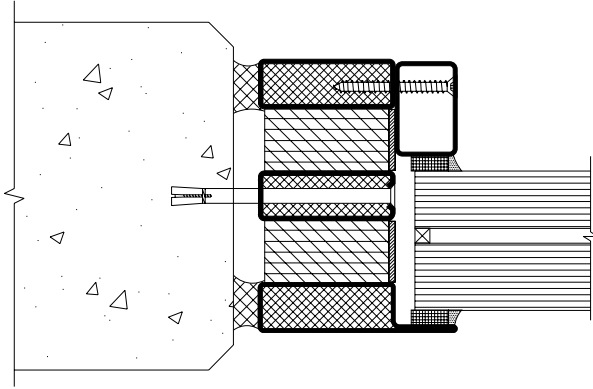
**Alternative centre line glazing profile
(internal application only)**

Note: this frame profile may require extended lead times

FIRE RATED GLAZING

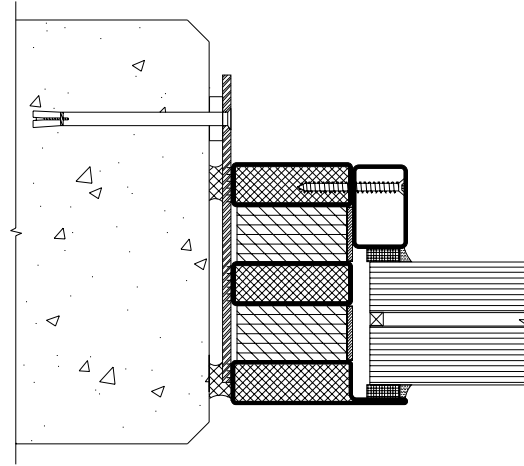
Pyrostop -/120/120 fire window

BUILDING IN AND FIXING TYPE DETAILS



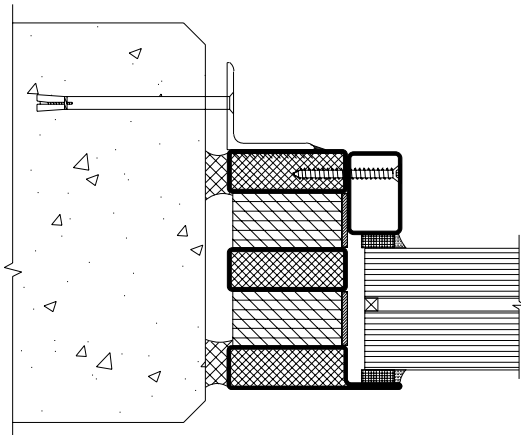
Fixing type FTFC01

M6 Flat head Dynabolt into masonry wall through steel frame, at max 600mm centers. Can only be used for site-glazed applications. Fixings to 3 sides minimum (4 recommended).



Fixing type FTFC03

M6 Dynabolt into masonry wall through 150 x 50 x 2.5mm welded steel plate at max 600mm centers. Can be used for factory-glazed or site-glazed applications. Fixings to 3 sides minimum (4 recommended).



Fixing type FTFC02

M6 Dynabolt into masonry wall through 75 x 75 x 3mm welded steel angle sections at max 600mm centers. Can be used for factory-glazed or site-glazed applications. Fixings to 3 sides minimum (4 recommended).

Pyropanel Developments Pty Ltd

235 Huntingdale Rd, Oakleigh, Vic 3166

Ph: (03) 9837 8500 Fax: (03) 9837 8550

Email: sales@pyropanel.com.au

Web: www.pyropanel.com.au

Distributed by: