

# FRAME PROFILES

## Upgrading non fire rated door frames

### DESCRIPTION

Allowable methods for upgrading non fire rated steel door frames to suit Pyropanel fire rated doorsets.

### APPLICATIONS

Ideal for most applications that have an existing non rated door frame (with a door stop less than 25mm) that now requires a fire rated doorset (with 25mm door stop), or where the door thickness needs to be increased.

### FEATURES

- Approved to AS 1530.4 - 1997.
- Approved on Pyropanel hinged doors for up to 4hrs fire rating.

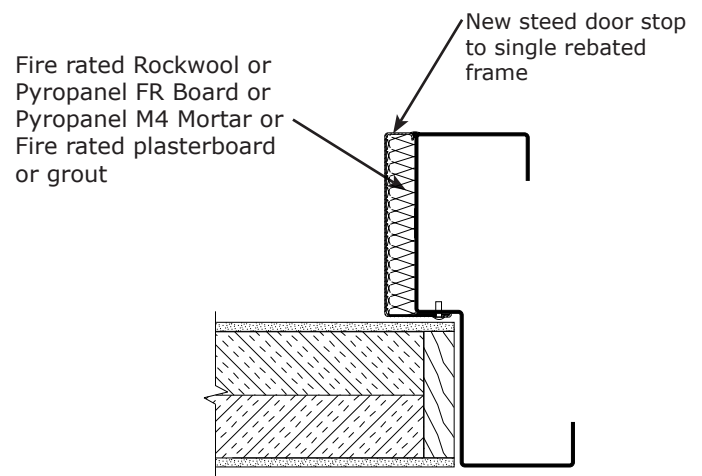
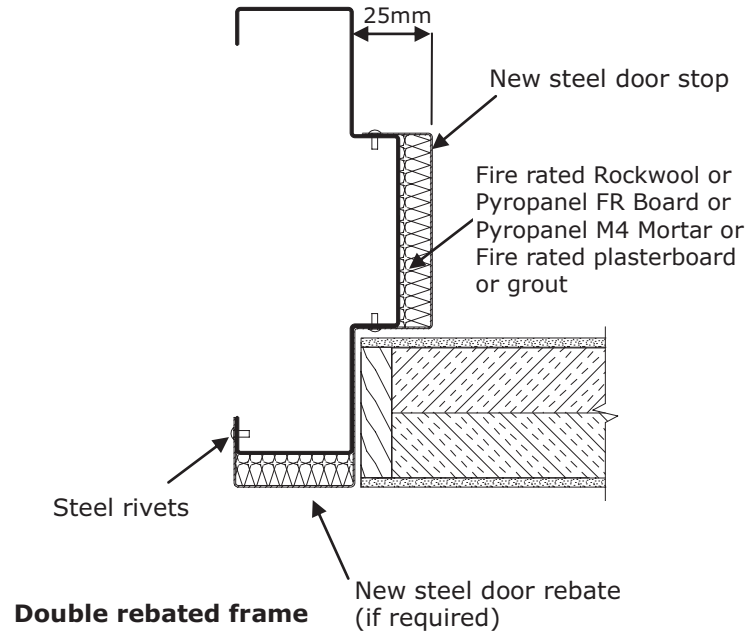
### ALLOWABLE METHOD

#### Door stops

- Existing door frame thickness must be at least 1.1mm.
- A steel channel is used to increase the door stop to at least 25mm thick.
- Pack new door stop with fire rated rockwool or Pyropanel FR Board.
- Mechanically fix new door stop by using either steel rivets or welding at 300mm centres.

#### Door rebate

- Existing door frame thickness must be at least 1.1mm.
- A steel channel is used to increase the door rebate to the desired measurement.
- Pack new door rebate with fire rated rockwool or Pyropanel FR Board or Pyropanel M4 Mortar or Fire rated plasterboard or grout.
- Mechanically fix new door stop by using either steel rivets or welding at 300mm centres.
- Ensure that frame and hinge plates are suitably located and strong enough to support the new door.



### Pyropanel Developments Pty Ltd

235 Huntingdale Rd, Oakleigh, Vic 3166

Ph: **(03) 9837 8500** Fax: (03) 9837 8550

Email: [sales@pyropanel.com.au](mailto:sales@pyropanel.com.au)

Web: [www.pyropanel.com.au](http://www.pyropanel.com.au)

### Distributed by: