

# BUILDING-IN DETAILS

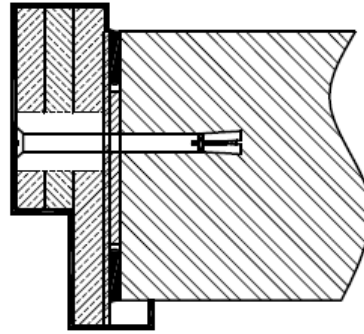
## Masonry, brick, aerated brick walls

### DESCRIPTION

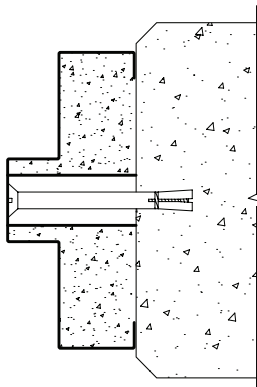
Building in details showing the approved fixing methods for masonry walls, including concrete, brick, aerated lightweight brick (Hebel®) masonry walls for up to 4 hours of fire rating.

### REQUIREMENTS

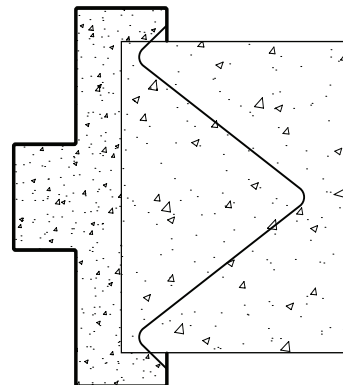
- Back-filling with fire rated plasterboard, plaster, Pyropanel M4 lightweight mortar or mortar is required to meet the frame Insulation requirements of 30 minutes to the current standards (AS 1530-2014). Back-filling with Pyropanel lightweight M4 Mortar is required for Insulation requirements of 60 minutes.
- Ensure all gaps are tightly filled with Pyropanel Multiflex fire rated acoustic sealant.
- Fixings (M10 masonry steel anchors) to be at max. 400mm centres (starting 250mm from the sill)
- Note: Some special installations (e.g timber architraves/ other cladding over steel frame) require a specific frame filling material. Please check prior to installation



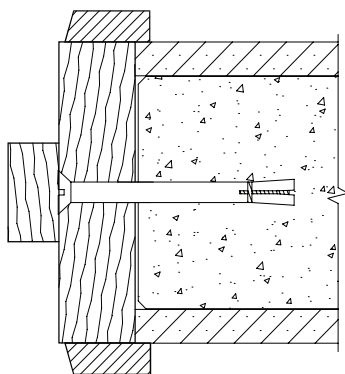
Slide in Steel frame with Dynabolt fixings at typically 400mm centres (up to 4 hours)



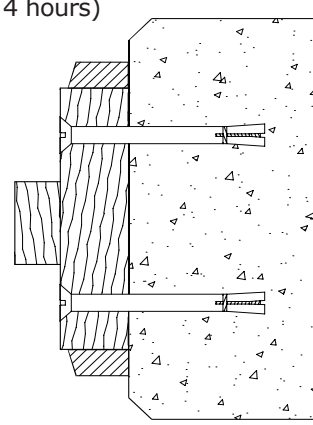
Steel frame with Dynabolt fixings at typically 400mm centres (up to 4 hours)



Wire ties for block wall or cast into concrete panel wall (up to 4 hours)



1hr Timber frame - single row of concealed dynabolts at typically 400mm centres (optional plaster wall lining shown)



Optional fixings for 1hr timber frame with two rows of dynabolts at typically 400mm centres. Also approved for fixing steel frames.

### Pyropanel Developments Pty Ltd

235 Huntingdale Rd, Oakleigh, Vic 3166

Ph: **(03) 9837 8500** Fax: (03) 9837 8550

Email: [sales@pyropanel.com.au](mailto:sales@pyropanel.com.au)

Web: [www.pyropanel.com.au](http://www.pyropanel.com.au)

### Distributed by: