

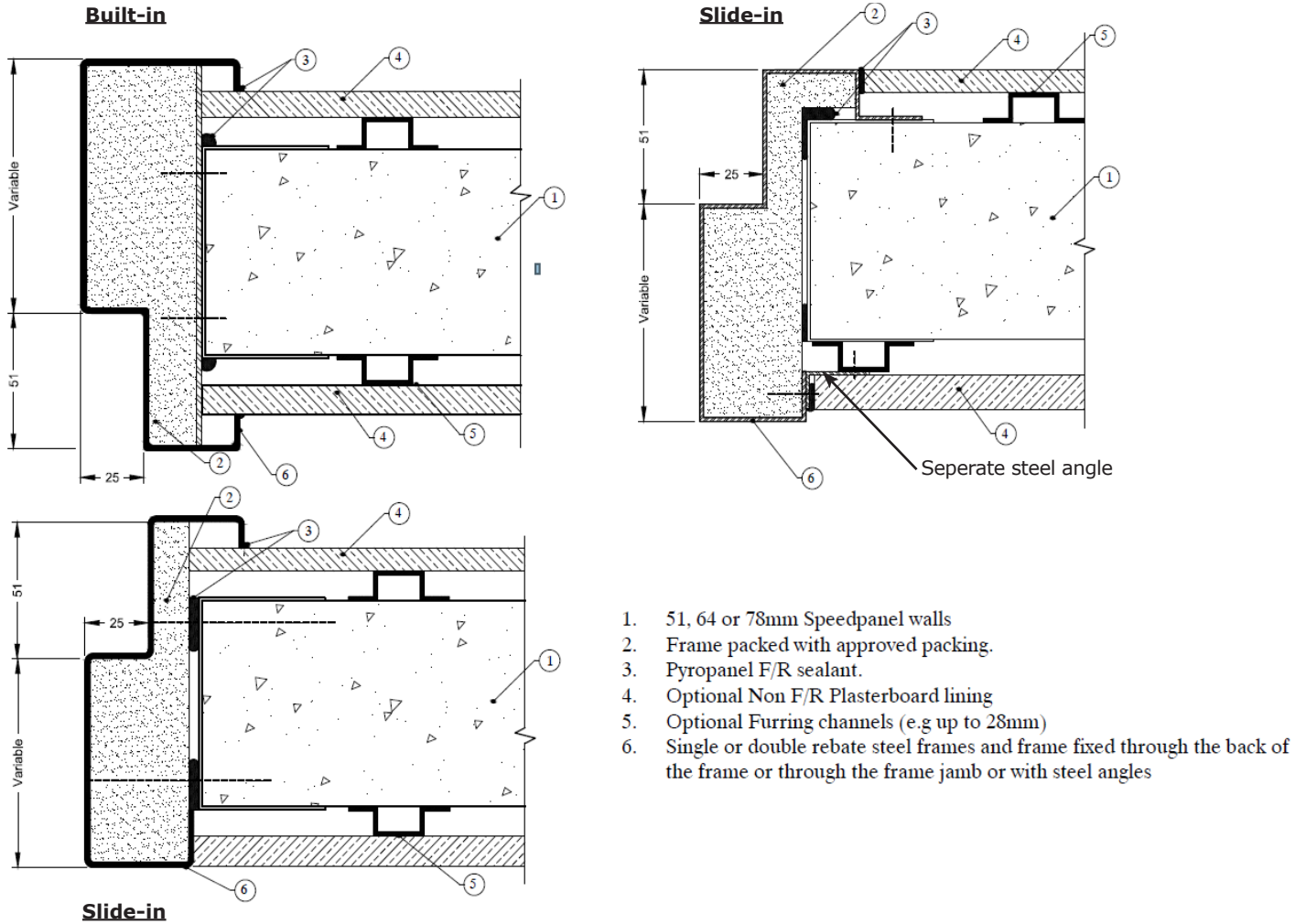
# BUILDING IN DETAILS

## Speedpanel walls (51, 64 & 78mm)

### DESCRIPTION

Building-in details showing the approved fixing methods for Pyropanel 48mm nominal doors in Speedpanel walls for up to 2 hours of fire rating (51mm = 1 hr, 64mm = 1.5 hrs, 78mm = 2 hrs).

### Slide-in & Built-in details with Speedpanels and optional plasterboard linings



**Note:** Approved frame packing materials: Fire rated plasterboard, Pyropanel M4 lightweight mortar or mortar. Frames screw fixed at nominal 400mm centres.

**Pyropanel Developments Pty Ltd**

235 Huntingdale Rd, Oakleigh, Vic 3166

Ph: **(03) 9837 8500** Fax: (03) 9837 8550

Email: [sales@pyropanel.com.au](mailto:sales@pyropanel.com.au)

Web: [www.pyropanel.com.au](http://www.pyropanel.com.au)

**Distributed by:**

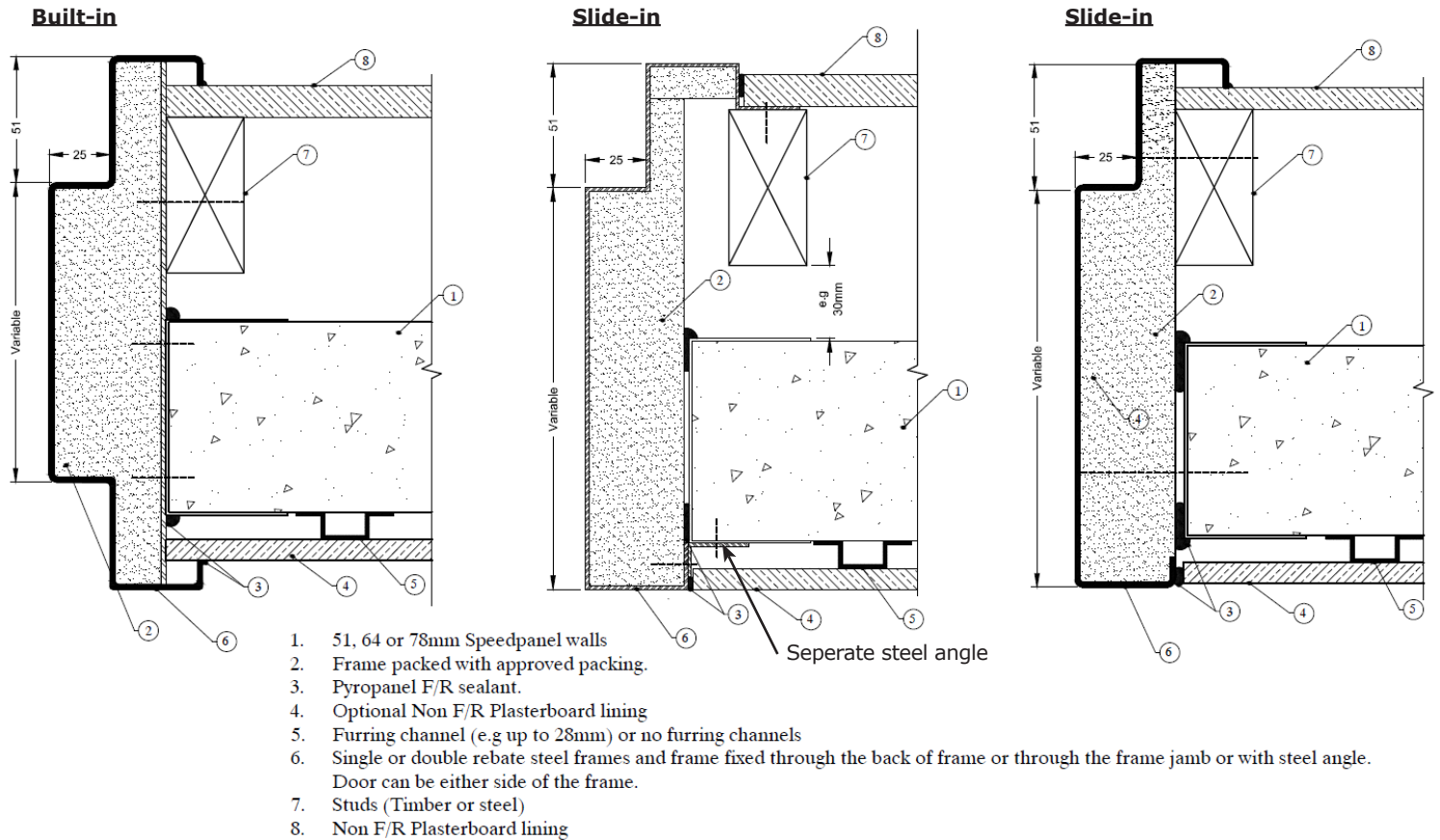
# BUILDING IN DETAILS

## Speedpanel walls (51, 64 & 78mm)

### BUILDING DETAILS CONTINUED...

Building-in details showing the approved fixing methods for Pyropanel 48mm nominal doors in Speedpanel walls for up to 2 hours of fire rating (51mm = 1 hr, 64mm = 1.5 hrs, 78mm = 2 hrs)

#### Slide-in & Built-in details with Speedpanel + plasterboard walls (one side)



**Note:** Approved frame packing materials: Fire rated plasterboard, Pyropanel M4 lightweight mortar or mortar. Frames screw fixed at nominal 400mm centres.

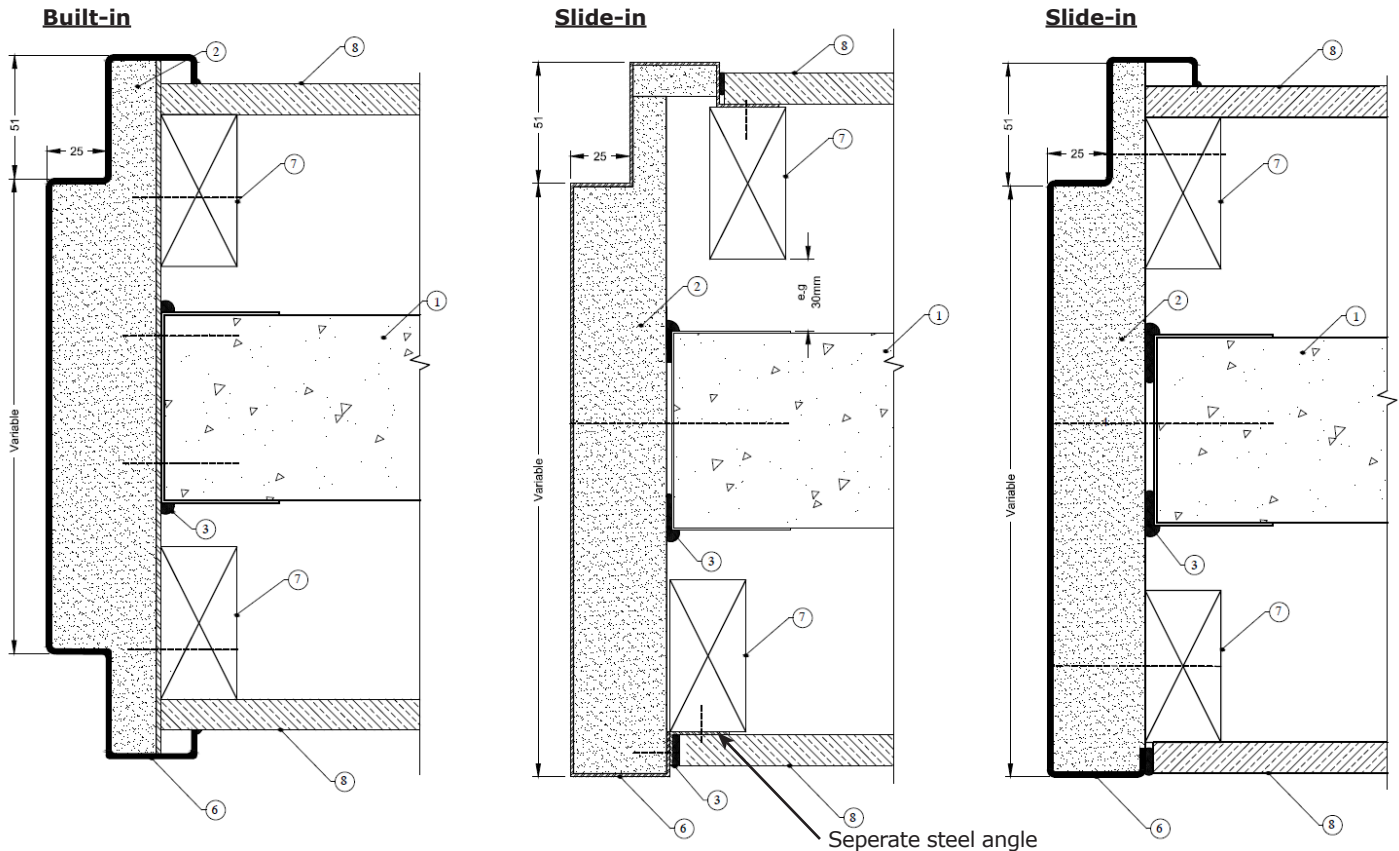
# BUILDING IN DETAILS

## Speedpanel walls (51, 64 & 78mm)

### BUILDING DETAILS CONTINUED...

Building-in details showing the approved fixing methods for Pyropanel 48mm nominal doors in Speedpanel walls for up to 2 hours of fire rating (51mm = 1 hr, 64mm = 1.5 hrs, 78mm = 2 hrs)

#### Slide-in & Built-in details with Speedpanel + plasterboard walls (either side)



**Note:** Approved frame packing materials: Fire rated plasterboard, Pyropanel M4 lightweight mortar or mortar. Frames screw fixed at nominal 400mm centres.