

40 Rw, Single leaf, Acoustic / Smoke Doorset (non-fire rated)

DESCRIPTION

Pyropanel AS-40-PAD is a single leaf, 40 Rw acoustic and smoke resistant doorset.

APPLICATIONS

Ideal for applications that require an acoustic rating of 40 Rw and smoke resistance.

FEATURES

Acoustic Rating

- 40 Rw.

Door Weight

- Approx 34 kg/m²

Smoke Resistance

- Meets the NCC requirement for a smoke door.

Door Configuration

- Single leaf.

Thickness

- 56mm (nominal)

Size

- Maximum Size - 2340 x 1020mm.

Hinges

- Minimum 4 steel hinges.

Frame

- Pyropanel Euroseal filled steel frame (1.6mm), or Pyropanel Euroseal KDHW timber frame.

Finish

- MDF to both faces.

Seal combinations

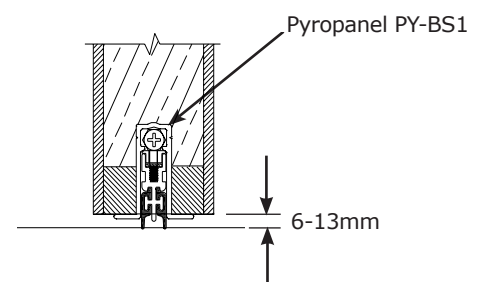
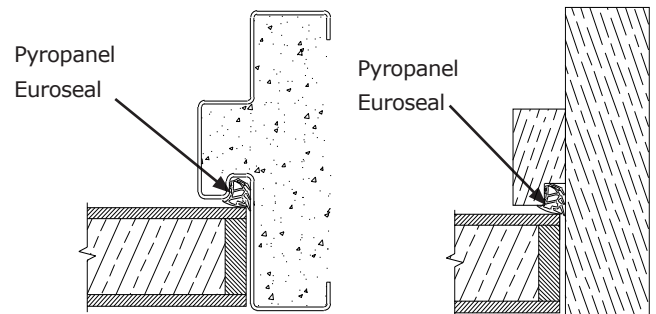
Door Type	Perimeter	Bottom	Rw
AS-40-PAD	Pyropanel Euroseal	Pyropanel PY-BS1	40

OPTIONAL EXTRAS

- Pre-hung in steel or timber frame.
- Decorative veneers.
- Steel faces.
- Pyropanel Pyrodur 13mm thick Vision panels - 300 x 200 or 600 x 100mm nom. Glass rated to 38 Rw. Note - The inclusion of a vision panel will cause a slight reduction in acoustic rating.

INSTALLATION

Door frame, Perimeter seal, Drop seal & Door leaf should be sourced from a Pyropanel Authorised Licensee as a complete set. Door frame must be tightly sealed against wall structure using Pyropanel Pyroseal acoustic sealant. Steel frames require packing with Pyropanel FR board or Pyropanel light weight M4 Mortar to achieve the acoustic rating.



HOW TO SPECIFY

"Doorset to be a Pyropanel AS-40-PAD acoustic door installed into a steel/timber* Euroseal frame".

* denotes example - delete, change or specify as required

Pyropanel Developments Pty Ltd

235 Huntingdale Road Oakleigh Vic 3166
 Ph: **(03) 9837 8500** Fax: (03) 9837 8550
 Email: sales@pyropanel.com.au
 Web: www.pyropanel.com.au

Distributed by: