

ACOUSTIC DOOR

AS-43-INTERCON

TECH SHEET—AS-43-INTERCON

Issue: 13-12-04

**2 hour fire rated 43 Rw twin leaf
acoustic / smoke / fire door**

DESCRIPTION

Pyropanel AS-43-INTERCON is a 43 Rw, 2 hour fire rated twin door leaf arrangement, consisting of two 47mm one hour doors in a single frame, both with Raven RP 39 and Raven RP 76 perimeter seals, and Raven RP 38 bottom seals.

APPLICATIONS

Ideal for interconnecting hotel rooms that may require up to 2 hours of fire rating and an Rw rating of 43.

FEATURES

Acoustic Rating

- 43 Rw (43 STC)

Test Certificate number

- DSIR 360/445/89(xi)

Fire Resistance

- -/120/60

Door Configuration

- Two doors in a single frame

Perimeter Seal

- Raven RP39 magnetic acoustic / smoke seals to both leaves, and,
- Raven RP76 to both leaves

Bottom Seal

- Raven RP38 to both leaves

Thickness

- 47mm (nominal) per door

Size

- Maximum Size - 2400 high x 1200 wide
- Minimum Size - 1980 high x 810 wide

Frame

- Double rebated KDHW timber or steel door frame designed to receive one door on each side. The separation distance between the leaves is 65mm

Finish

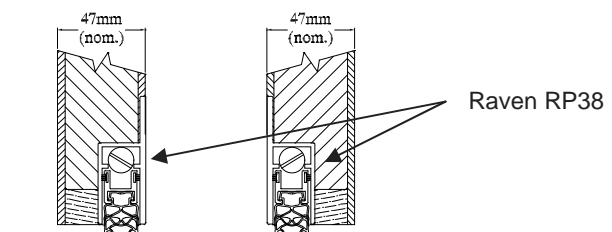
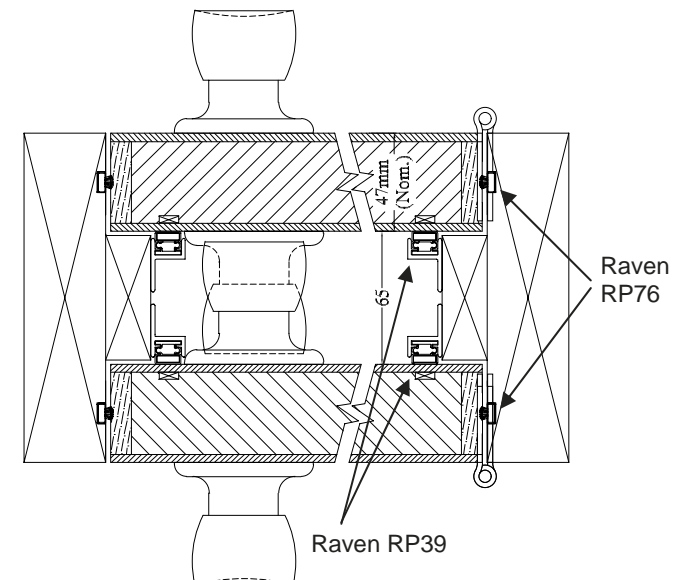
- MDF faces to both doors as standard

OPTIONAL EXTRAS

- Pre-hung in steel or timber frame
- Ply, Veneer, MDF or Laminate facings over existing faces
- Steel and Stainless steel facings
- Vision panels - 300 x 200 or 250 x 250mm.
- Kick Panels of 1.2mm Stainless Steel to selected height
- Meets the BCA requirement for a smoke door

INSTALLATION

Door frame must be tightly sealed against wall structure using Pyropanel Multiflex or approved alternative fire and acoustic sealant. Metal door frames will require packing with Pyropanel FR board, Fire rated plaster, concrete or mortar to achieve desired acoustic rating. Internal door hardware must be off-set to prevent any clashing when both leaves are closed.



HOW TO SPECIFY

"Door to be a Pyropanel AP-43-INTERCON acoustic door pair, installed into a Pyropanel timber / packed metal door frame"*

* denotes example—delete, change or specify as required



Pyropanel Developments Pty Ltd
122-124 Beresford Rd, Lilydale, VIC, 3140
Ph: (03) 9735 5688 Fax: (03) 9739 5772
Email: sales@pyropanel.com.au
Web: www.pyropanel.com.au

Distributed by: