

FIRE COLLARS

Titan Fire Collar

TECH SHEET: PAS-05

Issue: 23-10-07

Cast in fire collar suitable for sealing most types of plastic pipes passing through concrete slabs

Page 1 of 2

DESCRIPTION

A cast-in steel fire collar containing an intumescent material designed to crush the plastic pipe under fire conditions thus sealing against the passage of flame and hot gases for up to 4 hours.

APPLICATIONS

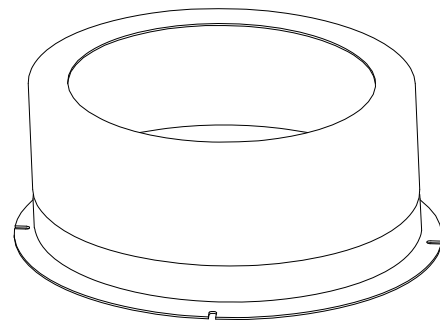
Especially designed for casting into concrete slabs, it provides a quick and cost effective solution for fire rating of plastic pipes, in high residential construction, flats, townhouses, apartments, civil projects, health care and aged care facilities, offices, etc.

FEATURES

- Fully certified to Australian Standards AS1530.4 and AS4072.1 for up to 4 hours of fire rating
- 10 sizes service pipe sizes from 20-150mm (nom)
- Designed and approved for most brands of PP, HDPE, uPVC, PE, ABS.
- Quick and easy to install - no adjustment necessary
- A cost effective fire stopping solution
- Tight fitting around pipe, which helps keep the pipe vertical during concrete pour
- Built in slurry seal.
- 10 year warranty on intumescent material
- Australian made

INSTRUCTIONS

- Push pipe through Titan fire collar
- Locate and attach Titan fire collar to formwork by nailing or screwing through the slots provided on the collar
- Twist pipe downwards to ensure pipe is resting on formwork prior to concrete pour
- Pour concrete and remove formwork
- Attach elbow or additional pipe



HOW TO SPECIFY

Eg, "Fire Collars to be Pyropanel "Titan" fire collars , installed as per manufacturers instructions"

MODELS AVAILABLE

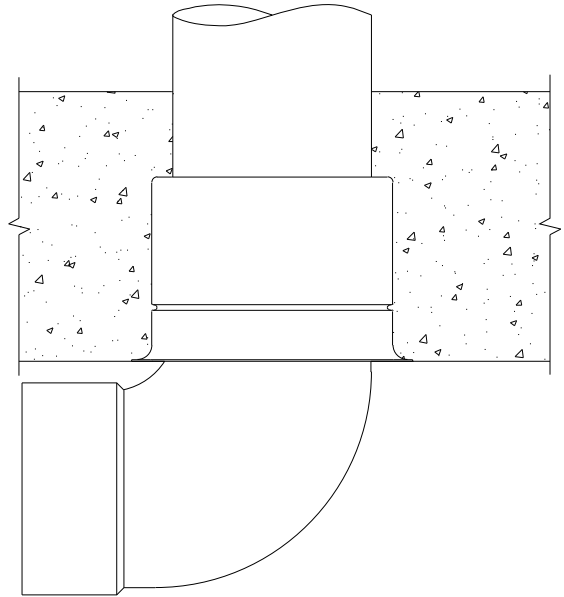
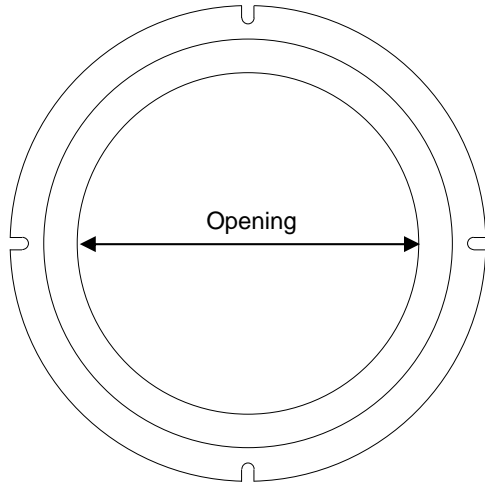
Model	Collar Name	To suit nominal pipe (mm)	Actual PVC pipe O.D (mm)	Collar opening	Collar width inc. flange	Collar height	Floor application
CLS040	Titan 40	40	43.1	45	84	90	uPVC, PP, PE, HDPE: -/240/240
CLS050	Titan 50	50	56	58	98	90	uPVC, PP, PE, HDPE: -/240/240
CLS065	Titan 65	65	69.1	71	116	90	uPVC, PP, PE, HDPE: -/240/240
CLS080	Titan 80	80	82.7	85	142	130	uPVC, PP, PE, HDPE: -/240/240
CLS100	Titan 100	100	110.4	112	171	105	uPVC, PP, PE, HDPE: -/240/240
CLS125	Titan 125	125	125	127	187	72	uPVC, PP, PE, HDPE: -/240/240
CLS150	Titan 150	150	160	163	240	120	uPVC, PP, PE, HDPE: -/240/240



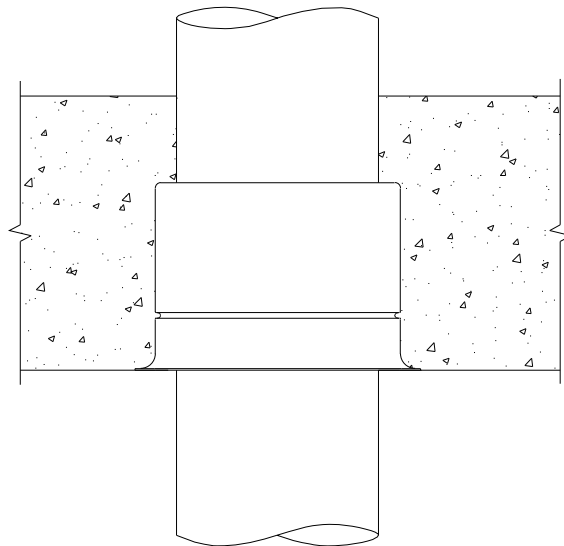
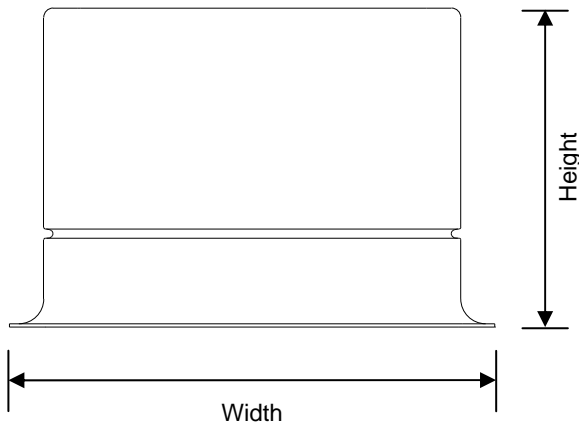
Pyropanel Developments Pty Ltd
122-124 Beresford Rd, Lilydale, VIC, 3140
Ph: (03) 9739 3100 Fax: (03) 9739 3115
Email: sales@pyropanel.com.au
Web: www.pyropanel.com.au

Distributed by:

BUILDING IN DETAILS



Typical installation showing elbow socket recessed into Titan fire collar



Typical installation showing pipe passing straight through Titan fire collar