

FIRE COLLARS

Retrofit Fire Collar (Single-fit)

TECH SHEET: PAS-03

Issue: 09-09-2011

Retrofit fire collar suitable for sealing most types of plastic pipes passing through concrete slabs and walls

Page 1 of 3

DESCRIPTION

A bolt on, steel cased retro-fit fire collar housing an intumescent material which is activated in the event of fire, crushing the plastic pipe and sealing against the passage of flame and hot gases. The intumescent material is unaffected by water, atmospheric influences and industrial environments, and is also resistant to dilute acids, alkalis, paints and conventional construction materials such as gypsum, lime, cement and adhesives.

APPLICATIONS

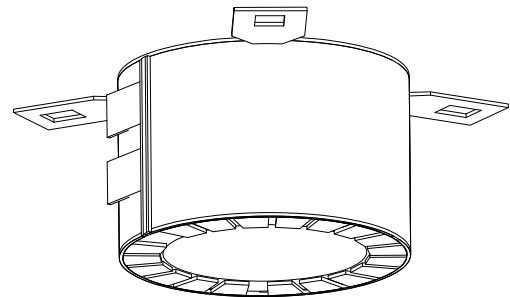
Suitable for use in fire rating plastic pipes passing through floors in high residential construction, flats, townhouses, apartments, civil projects, health care and aged care facilities, offices, etc.

FEATURES

- Fully certified to Australian Standards AS1530.4 and AS4072.1
- 7 collar sizes service pipe sizes from 32 to 150mm (nom)
- Low height of collar ensures maximum clearance for pipe fittings
- Quick and easy to install - no adjustment necessary
- A cost effective fire stopping solution
- Multi fit collars also available (see Tech PAS-02).
- Approved for installation on underside of masonry slabs, or attached to either side of masonry walls, and approved for floor wastes where insulation is not required (surface mounted or inverted).
- 10 year warranty on intumescent material
- Australian made

INSTRUCTIONS

- Clip collar around pipe
- Attach collar to underside of slab or to either side of wall using steel fixings (Dynabolts, steel, knock-ins).
- Seal any gap between collar and underside of slab or wall with Pyropanel Multiflex fire rated acrylic sealant (no not seal between pipe and inside of collar).



HOW TO SPECIFY

Eg, "Fire Collars to be Pyropanel 'RF' Retro-fit (single-fit) fire collars , installed as per manufacturers instructions"

MODELS AVAILABLE

Model	To suit nominal pipe (mm)	Actual PVC pipe O.D (mm)	Collar opening	Collar height	Collar width	Floor application	Wall Application
RF40	40	43.1	45	50	68	uPVC: -/240/240 PP, PE, HDPE, ABS: -/180/180	PVC, PP, PD, HDPE, ABS: -/120/60
RF50	50	56	58	50	85	uPVC: -/180/180 (-/180/120 floor waste) PP, PD, HDPE, ABS: -/240/240	PVC, PP, PD, HDPE, ABS: -/120/60
RF65	65	69.1	70	50	100	uPVC: -/180/180 PP, PD, HDPE, ABS: -/240/240	PVC, PP, PD, HDPE, ABS: -/120/60
RF80	80	82.7	85	55	115	uPVC: -/180/180 (-/180/120 floor waste) PP, PD, HDPE, ABS: -/240/240	PVC, PP, PD, HDPE, ABS: -/120/60
RF100	100	110.4	112	60	150	uPVC: -/180/180 (-/120/- floor waste) PP, PD, HDPE, ABS: -/240/240	PVC, PP, PD, HDPE, ABS: -/120/60
RF125	125	129	130	53	180	PP: -/120/120	Not suitable
RF150	150	160	165	60	205	uPVC: -/240/240 PP, PE, HDPE, ABS: -/120/120	PVC: -/120/60



Pyropanel Developments Pty Ltd
 122-124 Beresford Rd, Lilydale, VIC, 3140
 Ph: (03) 9739 3100 Fax: (03) 9739 3115
 Email: sales@pyropanel.com.au
 Web: www.pyropanel.com.au

Distributed by:

RF225 & RF300 Collars



INSTRUCTIONS

- Clip collar around pipe
- 6 fixing tabs on the collar. Attach collar to underside of slab or to either side of wall using steel fixings (Dynabolts, steel, knock-ins).
- Seal any gap between collar and underside of slab or wall with Pyropanel Multiflex fire rated acrylic sealant (no not seal between pipe and inside of collar).

HOW TO SPECIFY

Eg, "Fire Collars to be Pyropanel 'RF' Retro-fit (Single-fit) fire collars, installed as per manufacturers instructions"

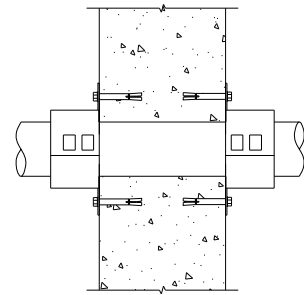
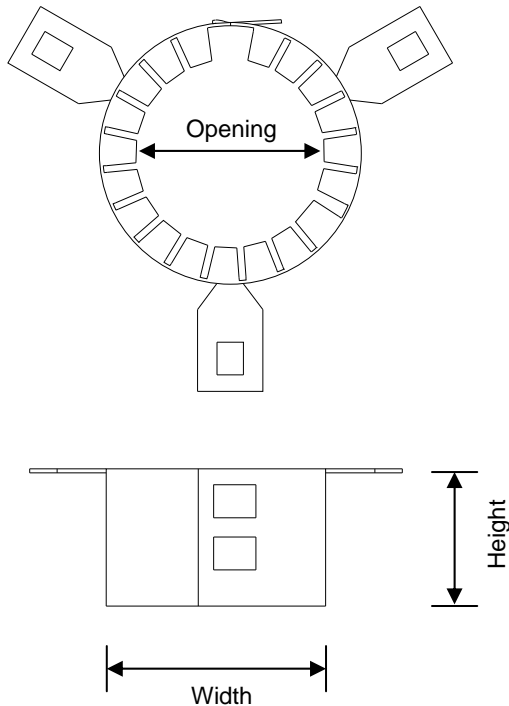
FEATURES

- Fully certified to Australian Standards AS1530.4
- 2 collar sizes, service pipe sizes 225 and 300mm (nom)
- Low height of collar ensures maximum clearance for pipe fittings
- Quick and easy to install - no adjustment necessary
- A cost effective fire stopping solution
- Approved for installation on underside of masonry slabs, or attached to either side of masonry walls, and approvals as shown in table below.
- 10 year warranty on intumescent material

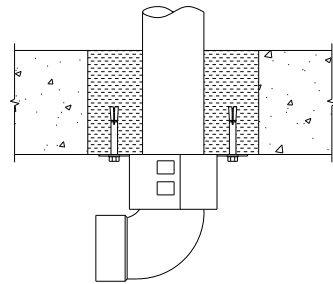
MODELS AVAILABLE

Model	To suit nominal pipe (mm)	Actual PVC pipe O.D (mm)	Collar opening	Collar height	Collar width	Pipe Wall Thickness	Floor application	Wall Application
RF225	225	250	255	65	305	7.2mm	uPVC: -/120/120	PVC: -/120/120
RF300	300	315	320	70	380	uPVC: 7.7mm PP: 15mm	uPVC: -/90/90 PP: -/120/120	PVC: -/180/180 PP: -/180/180

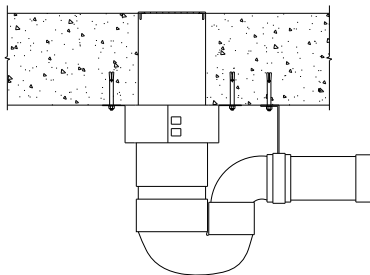
BUILDING IN DETAILS



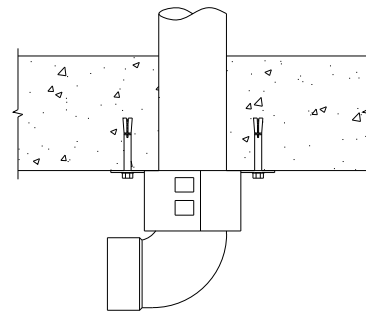
Typical wall application showing two retrofit collars fitted to fitted to both sides of a masonry wall.



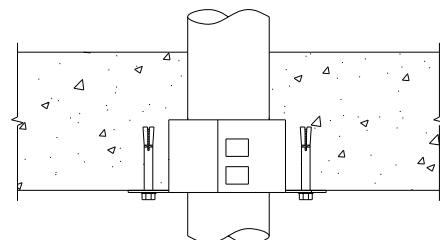
Typical floor application showing a retrofit collar fitted to underside of slab. Note backfilling of oversized hole if required.



Typical floor waste application showing surface mounted installation under slab (-/180/120)



Typical floor application showing a retrofit collar fitted to underside of slab, with pipe and elbow.



Alternative cast-in installation - Contact Pyropanel for confirmation of fire rating.