

# FIRE RATED ACCESS PANEL

## 1hr fire rated plasterboard ceiling access panel

TECH SHEET: PANEL-05

Issue: 08-09-06

**Hinged access panel suitable for plaster board ceilings**

### DESCRIPTION

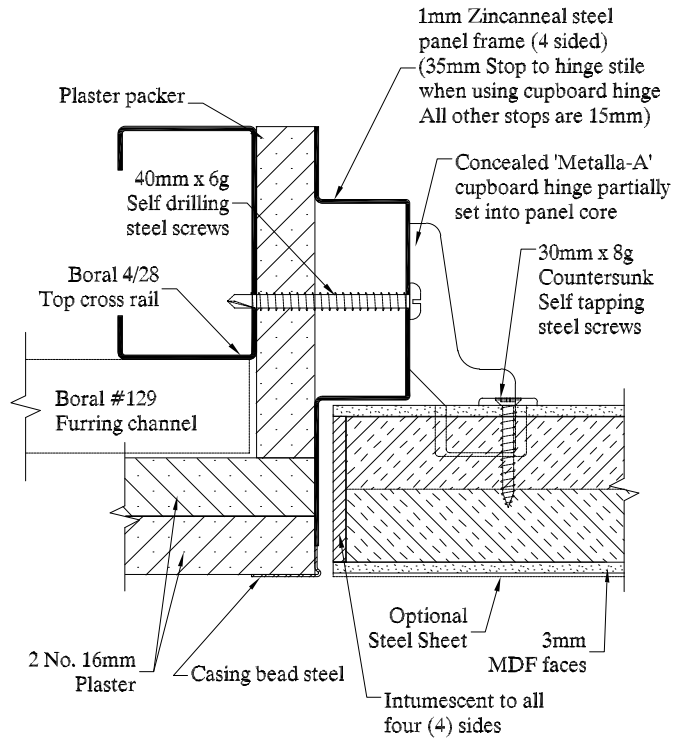
Hinged access panel installed into a steel framed plasterboard ceiling with a -/60/60 fire rating.

### APPLICATIONS

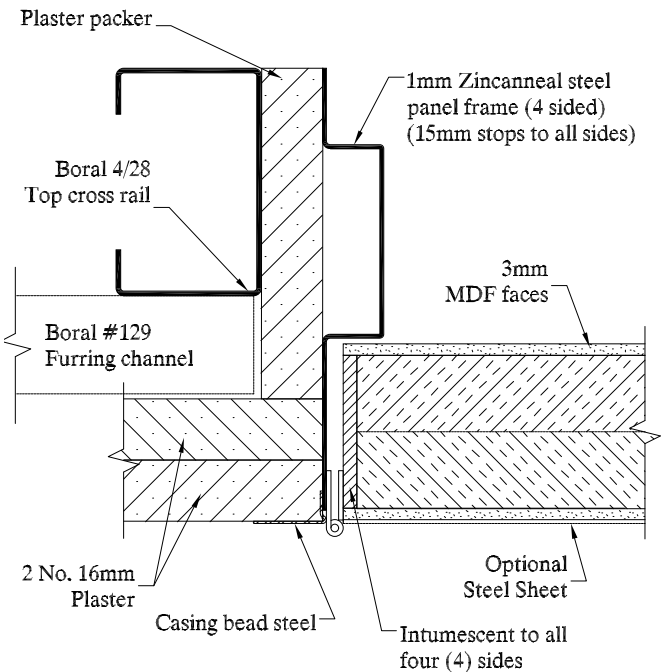
Shops, offices, apartments and any application where access needs to be achieved through a plaster lined ceiling without effecting the fire rating of the ceiling

### FEATURES

- Flush mounted or recess mounted
- 'Metalla-A' concealed cupboard hinges with 35mm frame rebate on hinge side, and 15mm frame rebate for remaining 3 sides, or
- Continuous 15 x 15 x 1.2 mm steel piano hinge with 15mm frame rebate on all 4 sides
- MDF facing as standard, or optional steel facing available
- Latched with either Bowman's cam-action or Budget lock
- 48mm thick
- Integrated hot temperature smoke / fire seals



**Ceiling panel with cupboard hinges**



**Ceiling panel with continuous hinges**

### MODELS

Model	FRL	Thickness	Max size
PCAP-CPS03	-/60/60	48	600 x 600

### HOW TO SPECIFY

"Eg. Access panel to be a Pyropanel fire rated plasterboard ceiling access panel PCAP-CPS03, -/60/60, MDF face\*, with a Budget lock\* and Metalla-A concealed cupboard hinges\*\*."

\* denotes example - delete, change or specify as required.



**Pyropanel Developments Pty Ltd**  
 122-124 Beresford Rd, Lilydale, VIC, 3140  
 Ph: (03) 9739 3100 Fax: (03) 9739 3115  
 Email: sales@pyropanel.com.au  
 Web: www.pyropanel.com.au

**Distributed by:**