

FIRE RATED GLAZING

Pyrostop -/60/60 and -/60/30 fire window

TECH SHEET: FW-04

Issue: 22-02-11

Fire rated window, -/60/60 and -/60/30, using Pilkington Pyrostop™ clear glass in an insulated steel frame

Page 1 of 3

DESCRIPTION

Insulated steel framed fire rated window providing one hour of integrity and insulation protection with perfectly clear Pilkington Pyrostop™ insulating glass, this system is a great solution for applications requiring certified fire resistance for both integrity and insulation and the added safety benefit of radiation protection.

APPLICATIONS

Fire escapes, smoke lobbies, computer rooms, car parks and factories, boundary walls, domestic houses or wherever there is a need for integrity and insulation protection, with the need to protect the building and occupants against the spread of fire due to radiant heat transmission.

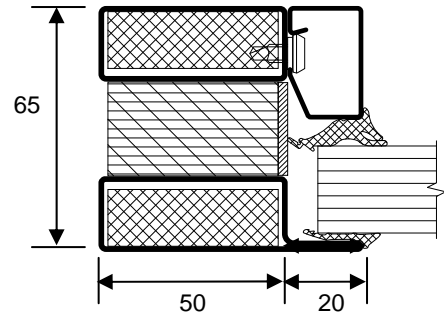
FEATURES

- Fully certified to Australian Standards AS1530.4
- -/60/60 FRL using 23mm Pilkington Pyrostop™ for internal applications, and 27mm for external applications
- -/60/30 FRL using 18mm Pilkington Pyrostop™ for both internal and external applications
- Reduces radiant heat transmission by 98%
- Internal and External applications
- Light transmission comparable to 5mm float glass
- Forster® Fuego Light triple insulated framing system
- Class A impact rated to AS2208
- For use in fire rated masonry walls
- Single and multiple panes up to 2865 x 1465 visible (3005 x 1605 overall frame size)
- Multi panes up to 4m high, no limitations on span
- Arched windows
- Can be integrated into steel framed -/60/30 glass fire doors (*Refer metal glass fire door tech sheet FD-06 for more information*)
- Standard finish is Prime Painted, ready for undercoating and top coat

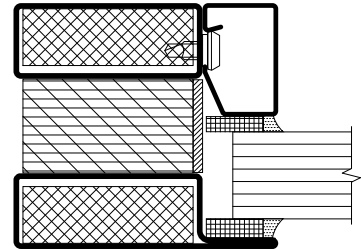
OPTIONAL EXTRAS

- Stainless Steel frames
- Powdercoating
- Tinted films

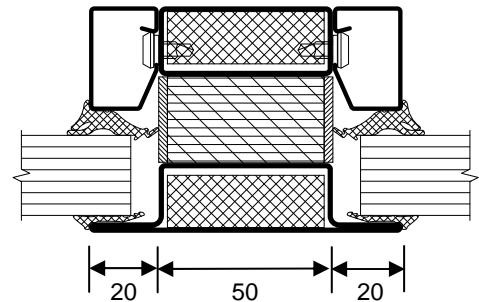
PROFILES



Standard profile with rubber beading (internal application)



Standard profile with silicone beading (internal or external application)



Standard mullion and transom profile

MODELS AVAILABLE

Model	FRL	Glass Thickness	Max Pane size (visible)
PFWS-PS60/60	-/60/60	23 or 27mm	2865 x 1465
PFWS-PS60/30	-/60/30	18mm	2400 x 1200

HOW TO SPECIFY

Eg, "Window to be fully test and certified Pyropanel Fire Window **PFWS-PS60/60**, -/60/60 FRL, incorporating Forster triple insulated steel frame and 23mm / 27mm* Pilkington Pyrostop™ clear intumescent glass, with rubber beading / silicone weather seal*. System available from Pyropanel Developments"

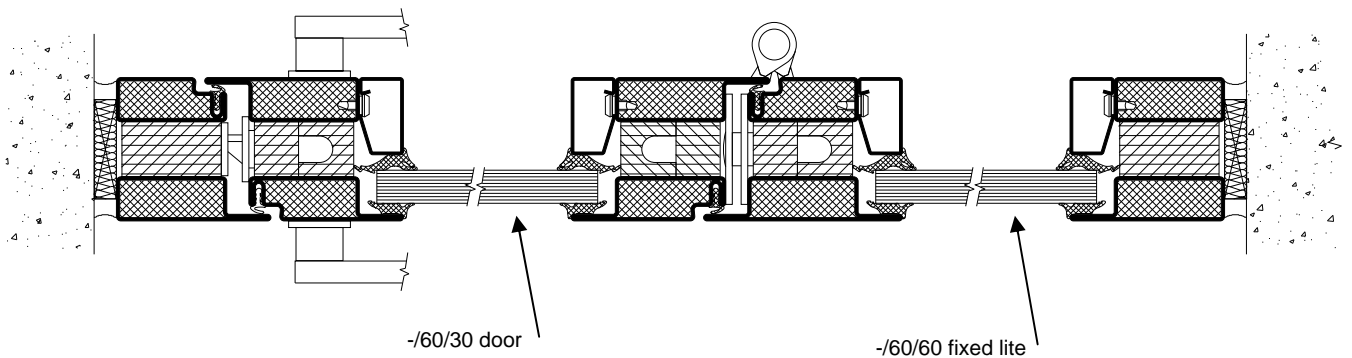
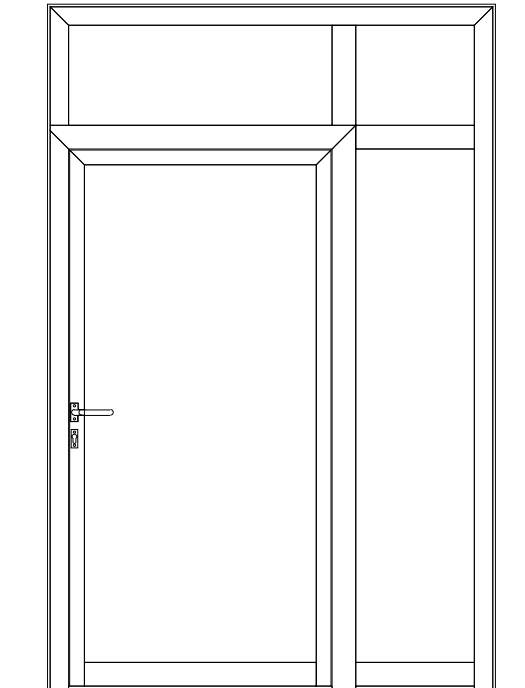
Continued...



Pyropanel Developments Pty Ltd
122-124 Beresford Rd, Lilydale, VIC, 3140
Ph: (03) 9739 3100 Fax: (03) 9739 3115
Email: sales@pyropanel.com.au
Web: www.pyropanel.com.au

Distributed by:

TYPICAL FIXED LITE / DOOR ASSEMBLY



GLASS DATA

Product	Nominal Thickness (mm)	Application	Integrity (mins)	Insulation (mins)	Sound Reduction**	Light transmission %	Approx weight of glass (kg/m ²)	Approx weight of glass and frame (kg/m ²)
Pyrostop™	18	Internal / External	60	30	38	85	42	55
Pyrostop™ with Optiwhite™	23	Internal	60	60	40	88	55	68
Pyrostop™ with Optiwhite™	27	Internal / External	60	60	41	86	63	76

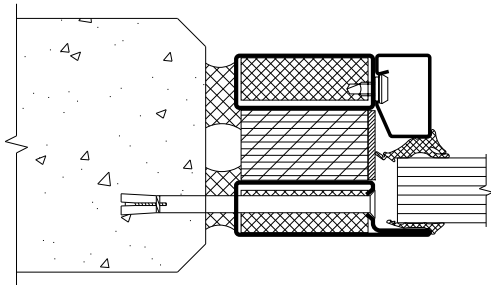
Continued...



Pyropanel Developments Pty Ltd
 122-124 Beresford Rd, Lilydale, VIC, 3140
 Ph: (03) 9739 3100 Fax: (03) 9739 3115
 Email: sales@pyropanel.com.au
 Web: www.pyropanel.com.au

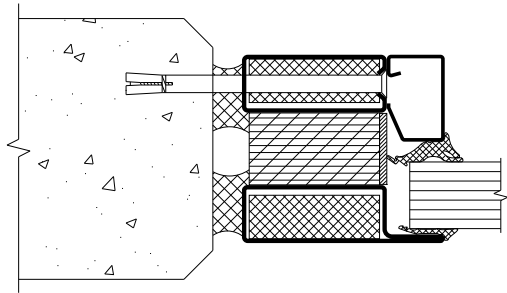
Distributed by:

WALL ABUTMENTS AND BUILDING IN DETAILS



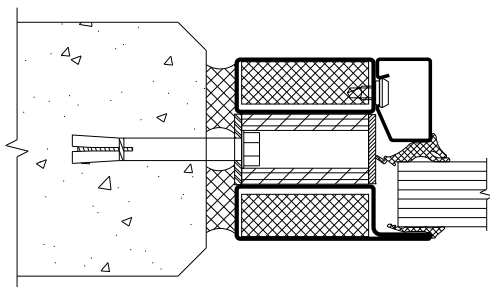
Fixing type FTFL01

M6 Flat head Dynabolt into masonry wall or 12G screws into fire rated Gyprock wall on lip side of frame, at max 600mm centers. Can only be used for site glazed applications. Fixings to 3 sides minimum.



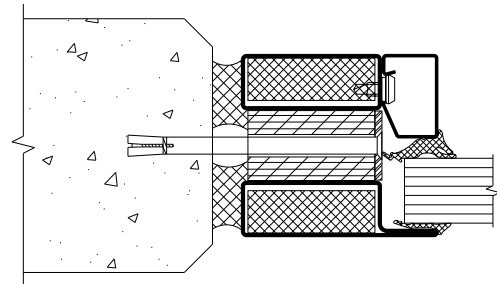
Fixing type FTFL02

M6 Flat head Dynabolt into masonry wall or 12G screws into fire rated Gyprock wall on beading side of frame, at max 600mm centers. Can only be used for site glazed applications. Fixings to 3 sides minimum.



Fixing type FTFL03

M6 Flat head Dynabolt into masonry wall or 12G screws into fire rated Gyprock wall recessed into middle of frame, at max 600mm centers. Can only be used for site glazed applications. Fixings to 3 sides minimum.



Fixing type FTFL04

M6 Flat head Dynabolt into masonry wall or 12G screws into fire rated Gyprock wall recessed into middle of frame, at max 600mm centers. Can only be used for site glazed applications. Fixings to 3 sides minimum.