

FIRE RATED GLAZING

Pyroceram -/240/- fire window

TECH SHEET: FW-02

Issue: 03-08-2010

Fire rated window, -/240/-, using Pyroceram glass in a steel frame

DESCRIPTION

Steel framed fire rated window providing up to four hours of integrity only protection, this system is a great solution for applications requiring certified fire resistance without the need for radiation protection, insulation protection, or the need for perfectly clear glass.

APPLICATIONS

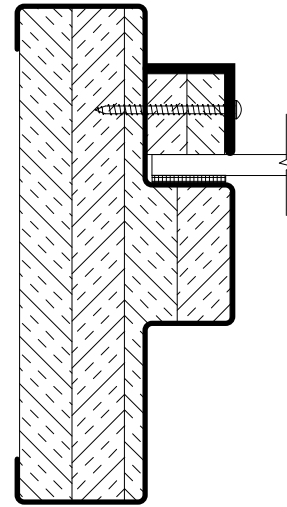
Car parks, factories and boundary walls, or wherever there is a need for integrity only protection without a requirement for protection against the spread of fire due to heat transfer. This glass does not provide any level of radiation protection and should not be used in an escape route or where occupants could be exposed to radiant heat.

FEATURES

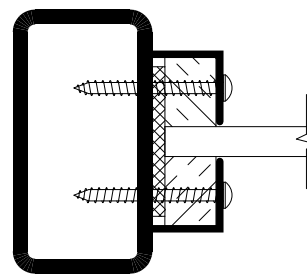
- Fully certified to Australian Standards
- -/60/-, -/120/-, -/240/- FRL depending on application and FRL of wall
- 5mm Pyroceram ceramic glass (slightly bronze colour in appearance)
- Pressed metal or RHS frame system
- NOTE: This glass has no impact rating to AS1288 (not suitable for applications requiring safety glass)
- For use in 1hr timber and steel stud walls, all fire rated masonry walls, gypsum block walls, aerated concrete blocks and wall panels. *Refer to Pyropanel if your wall type is not listed.*
- All frames must be fully packed with Rockwool, Pyropanel FR board, Fire rated plaster, Mortar or concrete
- Single panes up to 1510 x 840 visible
- Multi-lites with panes up to 1510 x 840 visible (total maximum assembly size
 - 3300mm (h) x 1560mm (w) or
 - 1560mm (h) x 2400mm (w)
- Arched windows available
- Tested and approved for use as side-lites and top-lites adjacent to Pyropanel fire doors (*note: no insulation protection provided*)

OPTIONAL EXTRAS

- Galvanised frames
- Stainless Steel frames
- Double glazing
- Impact rated film
- Obscure films



Standard pressed metal window profile



Alternative RHS window profile
(not recommended for external applications)

MODELS AVAILABLE

Model	FRL Up to:	Glass thickness	Max visible glass	Max overall frame size (approx)
PFWS-PC240/-	-/240/-	5mm	1510 x 840	1640 x 970

HOW TO SPECIFY

Eg, "Window to be a Pyropanel **PFWS-PC240/-** Certified -/240/- FRL* fire window, incorporating non impact rated 5mm Pyroceram glass, mounted in pressed metal window frame*, prime paint / powdercoat / stainless steel* finish, (builder to fully pack frame as required)"

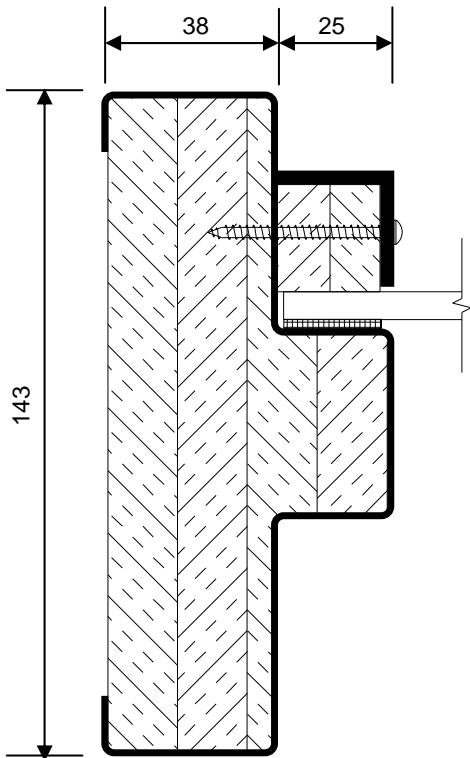
* denotes example - delete or change or specify as required



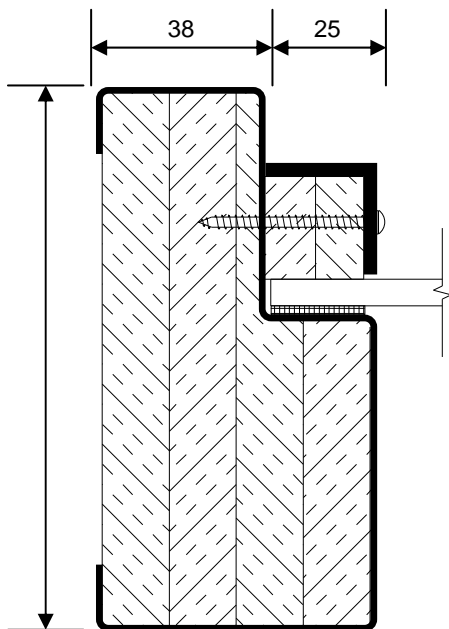
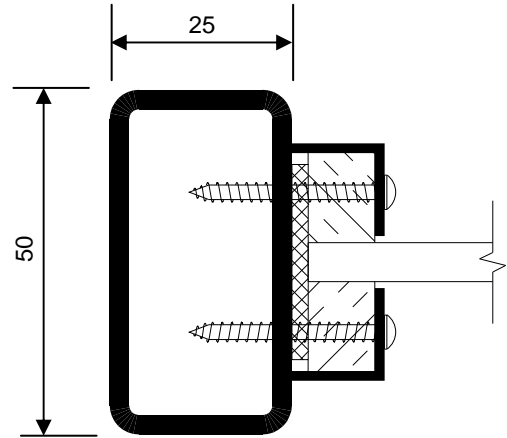
Pyropanel Developments Pty Ltd
122-124 Beresford Rd, Lilydale, VIC, 3140
Ph: (03) 9739 3100 Fax: (03) 9739 3115
Email: sales@pyropanel.com.au
Web: www.pyropanel.com.au

Distributed by:

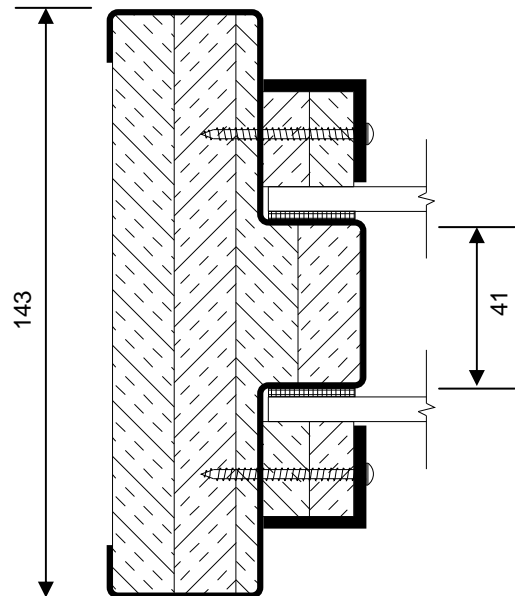
TYPICAL SECTIONS



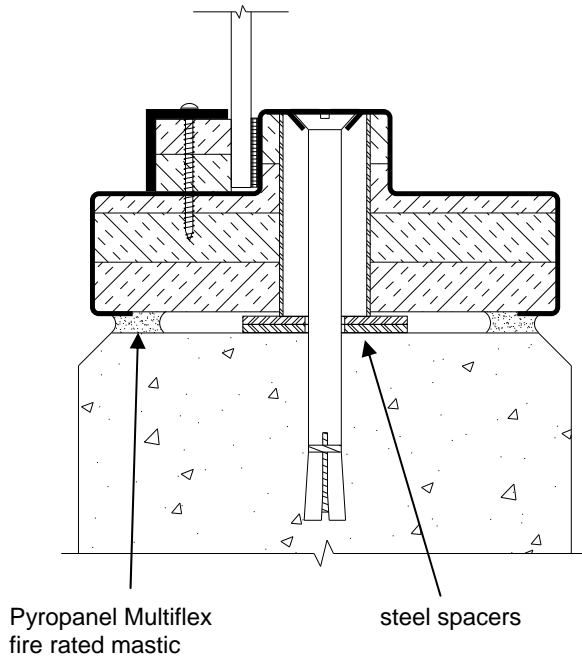
Pressed metal double rebated window frame



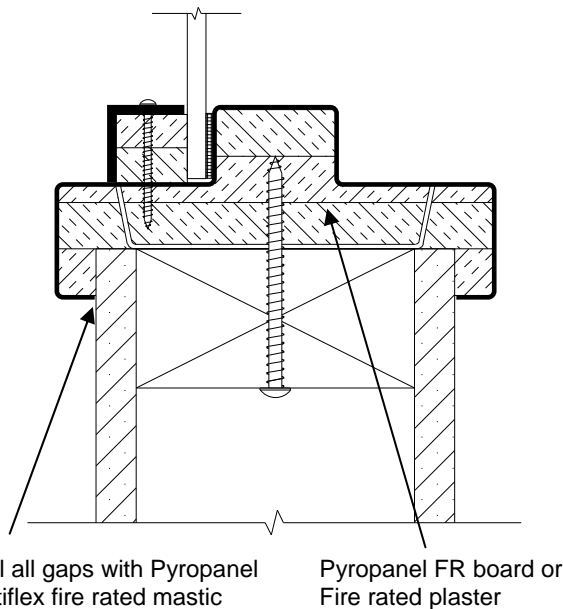
Pressed metal single rebated window frame



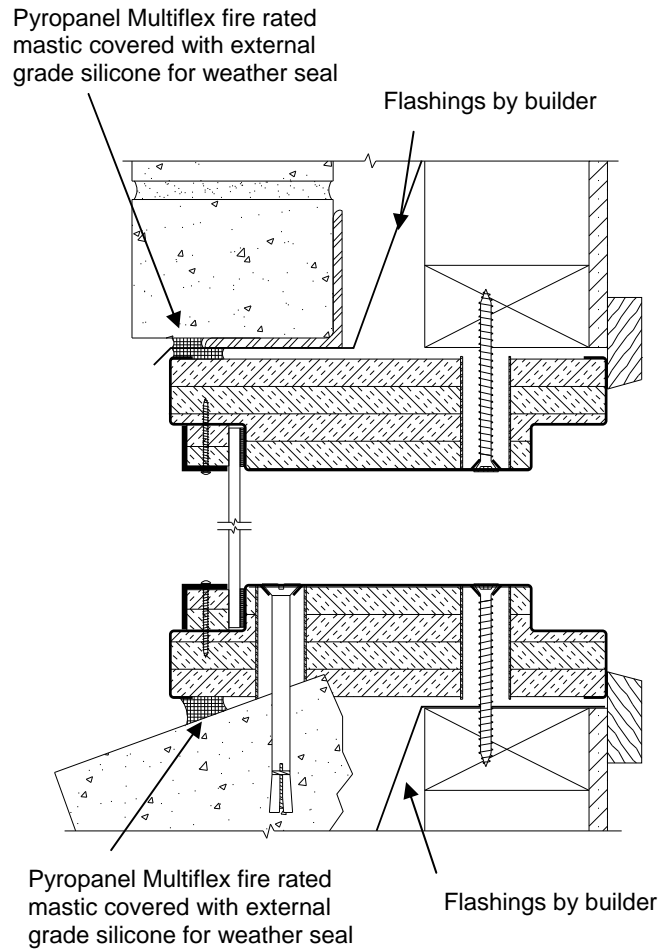
WALL ABUTMENTS AND BUILDING IN DETAILS



Typical wall fixing for masonry and pre-cast concrete walls



Typical wall fixing for masonry and pre-cast concrete walls



Ensure all gaps are tightly sealed with fire rated sealant, and that the frames are fully packed with Pyropanel FR board, Fire rated plaster, mortar or concrete. Back of window frame must abut fire rated element of wall (generally brick).

Suggested fixing detail for brick veneer applications (not tested).