

# FIRE DOOR LEAVES

## Fire door and panel over (with transom)

TECH SHEET: FD-08

Issue: 11-06-2010

**Fire doorsets and panel over with separating transom for singles and pairs, up to 4 hours fire rating**

### DESCRIPTION

Timber fire door leaves and panel over including separating transom utilising the latest Pyropanel fire resistant door core and design technology. These doorsets are fully tested and certified to AS1530.4 and AS1905.1, and are available in a variety of sizes and finishes in 30 minute, 1 hour, 2 hour and 4 hour fire resistance levels.

### APPLICATIONS

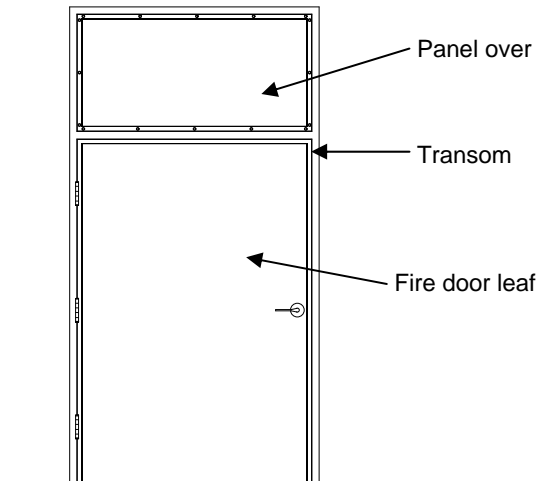
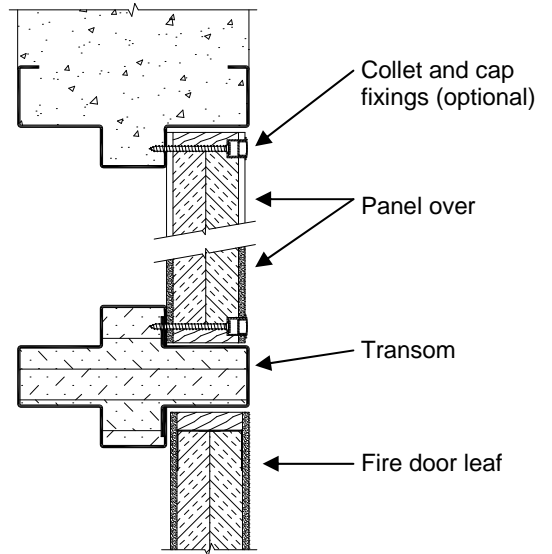
Ideal for applications that require a certified fire door and a panel over with a separating transom. Typically found in office lobbies, hospitals, schools, public buildings, shopping centres, factories, warehouses, plant rooms, etc.

### FEATURES

- Panel available over single and pair fire door leaf configurations (note: panel over pair doors is a single panel only)
- Door and panel are 48mm thick.
- Pressed metal door frames only.
- Ply faces.
- Panel is screw fixed, with optional collet and cap fixings.

### OPTIONAL EXTRAS

- Veneer, steel, aluminium, PVC, laminate.
- Vision panels up to 300 x 200 or 600 x 100mm for fire door using clear fire rated glass.
- Kick panels of stainless steel to selected height.
- Smoke seals, viewing lens, electric strikes and locks, panic bars, magnetic hold open devices, etc, are all optional hardware items - Refer to Pyropanel hardware tech sheet for the latest edition of the approved hardware, or contact Pyropanel for any items that are not listed.



### MODELS AVAILABLE

Model	Description	Max FRL	Thick-ness	Max overall size (leaf and panel)
FDPO-WT-120-30	Panel over with transom	-/120/30	48	3600 x 1200 /1200
FDPO-WT-240-30	Panel over with transom	-/240/30	48	3350 x 1200 /1200

### HOW TO SPECIFY

"Door to be a (eg) Pyropanel PFD060-48\* Fire Rated Door, 48mm thick, -/60/30 FRL, Ply face\*, mounted in Pyropanel PMDF / Pyropanel Fire rated steel door frame with a Pyropanel **FDPO-WT-120-30 (FIRE DOOR PANEL OVER WITH TRANSOM)**, and the following options: (eg, vision panels, kick panels, etc\*),

\* denotes example - delete, change or specify as required.



**Pyropanel Developments Pty Ltd**  
 122-124 Beresford Rd, Lilydale, VIC, 3140  
 Ph: (03) 9735 5688 Fax: (03) 9739 5772  
 Email: sales@pyropanel.com.au  
 Web: www.pyropanel.com.au

**Distributed by:**