

BUILDING IN DETAILS

Masonry, brick, aerated brick walls

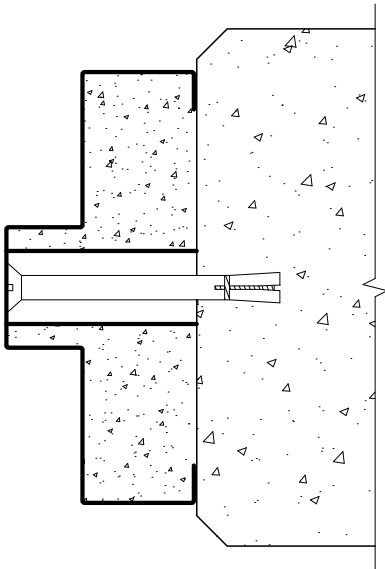
TECH SHEET: BUILD-02

Issue: 07-06-2010

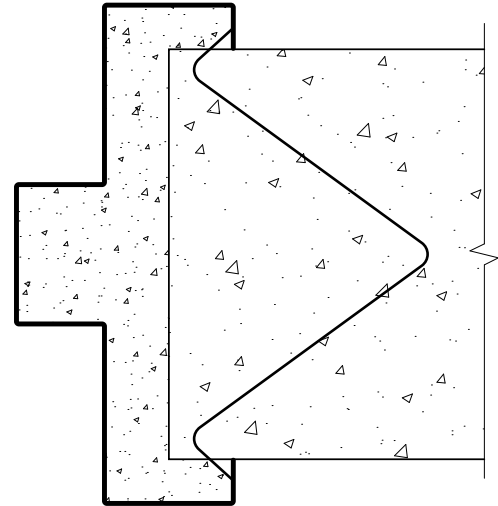
Allowable building in details for masonry (concrete, brick, etc) walls

DESCRIPTION

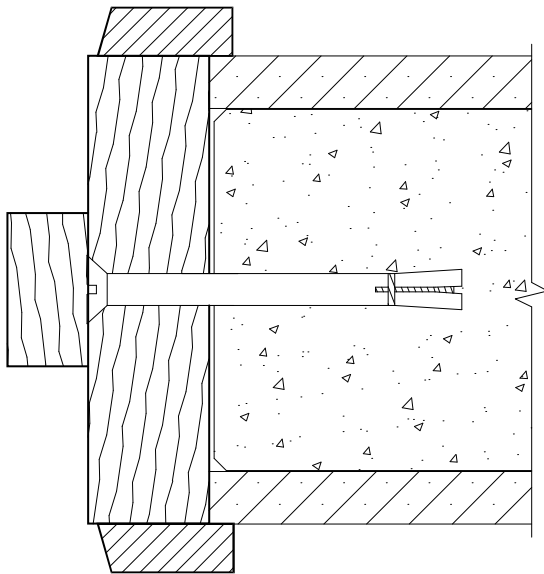
Building in details showing the approved fixing methods for masonry walls, including concrete, brick, aerated lightweight brick (Hebel®) walls for up to 4 hours of fire rating.



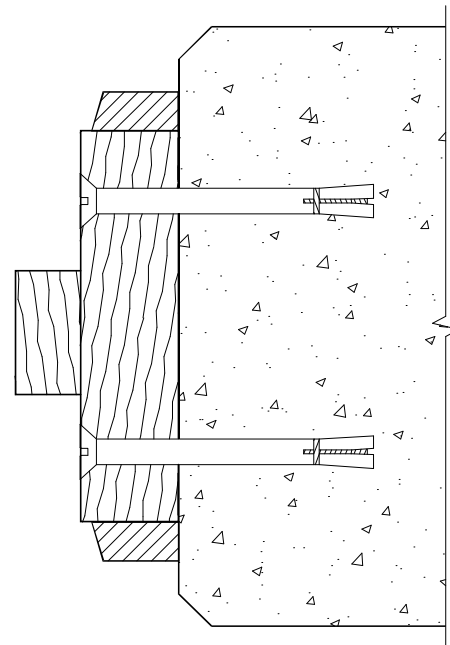
Steel frame with Dynabolt fixings at typically 400mm centres (up to 4 hours)



Wire ties for block wall or cast into concrete panel wall (up to 4 hours)



Timber frame - single row of concealed dynabolts at typically 400mm centres (optional rebate for plaster wall lining shown) (Up to 1hour)



Optional fixing for timber frame with two rows of dynabolts at typically 400mm centres. Also approved for fixing steel



Pyropanel Developments Pty Ltd
122-124 Beresford Rd, Lilydale, VIC, 3140
Ph: (03) 9735 5688 Fax: (03) 9739 5772
Email: sales@pyropanel.com.au
Web: www.pyropanel.com.au

Distributed by: