

# ACCESSORIES

## Fire rated vision panel

TECH SHEET: ACC-07

Issue: 03-08-2010

**Fire rated vision panels suitable for up to 4 hr fire rated doors**

Page 1 of 2

### DESCRIPTION

Vision panels utilising Pilkington Pyrodur™, Georgian wired glass and Pyroceram glass, mounted in aluminium, steel or stainless steel surrounds for up to 4 hours of fire rating.

### APPLICATIONS

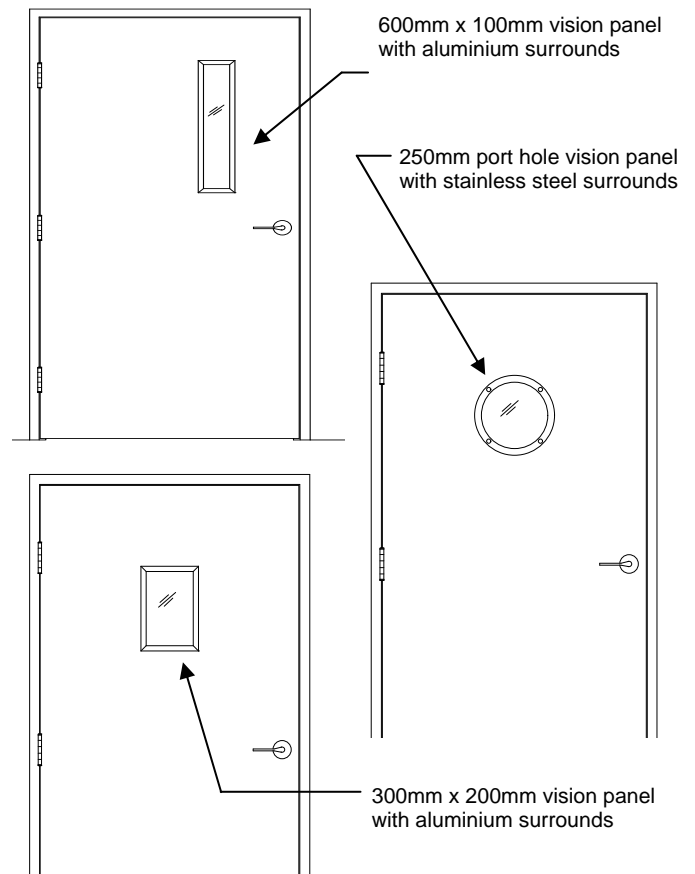
Fire doors located in car parks, factories schools, hospitals, or wherever there is a need to see through a fire door. Suitable for all Pyropanel timber and steel fire doors. *Note: Australian Standards 1530.4 and 1905.1 limit visible area for glass that has an insulation value less than 30 minutes to a maximum area 65,000mm<sup>2</sup>, when used in fire doors.*

### FEATURES

- All options fully certified to Australian Standards
- Standard sizes: 300mm x 200mm (nom), 600mm x 100mm (nom) and 250mm (nom) diameter porthole
- 13mm Pilkington Pyrodur glass
  - Perfectly clear glass
  - Grade A safety glass (AS1288)
  - 2 hr fire rating
  - Maximum 65,000mm<sup>2</sup> visible
  - Suitable for 38mm and 48mm doors
- 6mm Georgian wired glass
  - Clear in appearance
  - 10mm steel wires
  - Grade B safety glass (approved for use in doors)
  - 1 hr fire rated
  - Maximum 65,000mm<sup>2</sup> visible
  - Suitable for 38mm and 48mm doors
- 5mm Pyroceram ceramic glass
  - Slightly bronze colour in appearance
  - Non safety glass (impact film must be applied to comply with AS1288)
  - 4 hr fire rated
  - Maximum 65,000mm<sup>2</sup> visible
  - Suitable for 38mm and 48mm doors

### OPTIONAL EXTRAS

- Custom sizes available
- For vision panels greater than 65,000mm<sup>2</sup> visible area, please refer to "Glass fire doors" within the Fire Door section



### HOW TO SPECIFY

Eg, "Door to have 600 x 100mm\* Pyropanel PVP-Pyrodur\* vision panel including anodised aluminium surrounds..."

\* denotes example - delete or change or specify as required

### MODELS AVAILABLE

Continued...

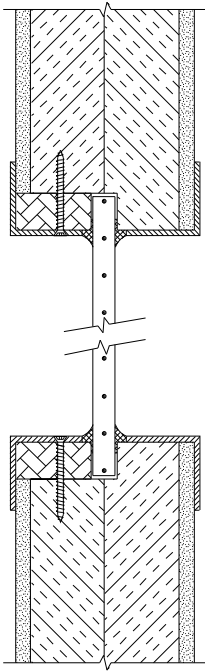
Model	Maximum fire rating	Glass	Light transmission	Thickness	Wires	Impact rated	Requires additional impact film?	Aluminium Surrounds?	Maximum Visible area
PVP-Georgian	1hr	Georgian wire	75% (approx)	6mm	Yes	Grade B	No	Yes	65,000mm <sup>2</sup>
PVP-Pyrodur	2hr	Pyrodur™	85%	13mm	No	Grade A	No	Yes	65,000mm <sup>2</sup>
PVP-Pyroceram	4hr	Pyroceram™	65% (approx)	5mm	No	No	Yes	Yes	65,000mm <sup>2</sup>



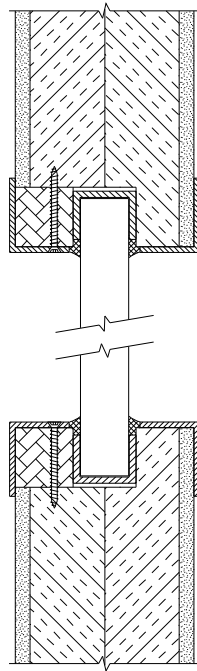
**Pyropanel Developments** Pty Ltd  
 122-124 Beresford Rd, Lilydale, VIC, 3140  
 Ph: (03) 9739 3100 Fax: (03) 9739 3115  
 Email: sales@pyropanel.com.au  
 Web: www.pyropanel.com.au

**Distributed by:**

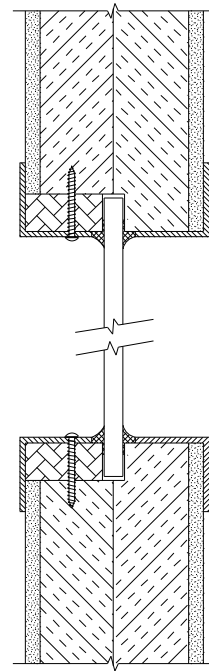
## TYPICAL SECTIONS



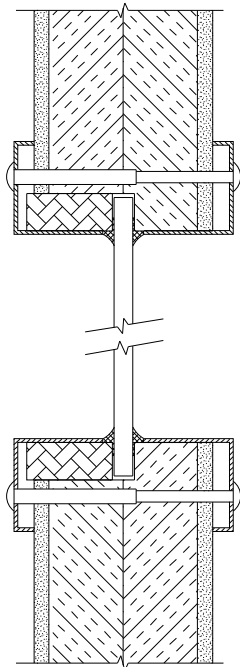
6mm Georgian wired glass vision panel (1 hr)



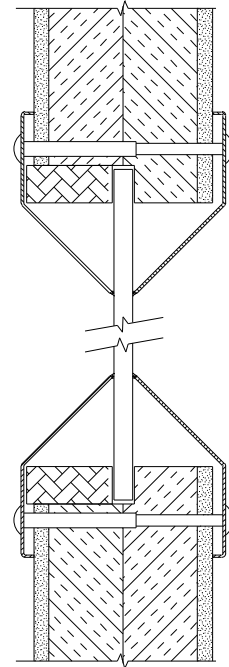
13mm Pilkington Pyrodur™ vision panel (2 hr)



5mm Pyroceram vision panel (4 hr)



Standard port hole vision panel with square edge surrounds



Optional port hole vision panel with angled edge surrounds