

# **Access Panels System Guide**

---



# ACCESS PANELS SYSTEM GUIDE

Issue: 03-05-2011

## Introduction

Pyropanel Developments have developed a range of wall, ceiling and floor access panels that are designed to meet the requirements of most applications with modern building design. Fully certified to Australian Standards and available in a variety of fire resistance levels, these panels provide cost effective solutions that are readily available and easy to install.

## Applications

Commercial and high rise residential buildings where access to services is required through fire rated walls, ceilings and floors

## Models available

Model	FRL	Panel Thickness (mm)	Maximum panel size (mm)	Facing	Tech sheet
-------	-----	----------------------	-------------------------	--------	------------

### Wall Panels

PWAP-60/60	-/60/60	48	2400 x 1000	Timber or steel	PANEL-01
PWAP-120/60	-/120/60	48	2400 x 1000	Timber or steel	PANEL-02
PWAP-120/120	-/120/120	73	2400 x 1000	Timber or steel	PANEL-02
PWAP-240/60	-/240/60	48	2200 x 600	Timber or steel	PANEL-03
PWAP-240/120	-/240/120	73	2200 x 600	Timber or steel	PANEL-03

### Lift shaft wall panel

Model	FRL	Panel Thickness	Maximum panel size	Facing	Tech sheet
PLWAP-90/60	-/90/60	48mm	1570 x 470	Timber or Steel	PANEL-04

### Plasterboard ceiling access panel

Model	FRL	Panel Thickness	Maximum panel size	Facing	Tech sheet
PCAP-CP03	-/60/60	48mm	600 x 600	Timber or Steel	PANEL-05

### Lift motor room hatch / floor access panel

Model	FRL	Panel Thickness	Maximum panel size	Facing	Tech sheet
PFAP-240/120	-/240/120	48mm	1700 x 500	Timber or Steel	PANEL-06
PFAP-120/120	-/120/120	48mm	1275 x 850	Timber or Steel	PANEL-06



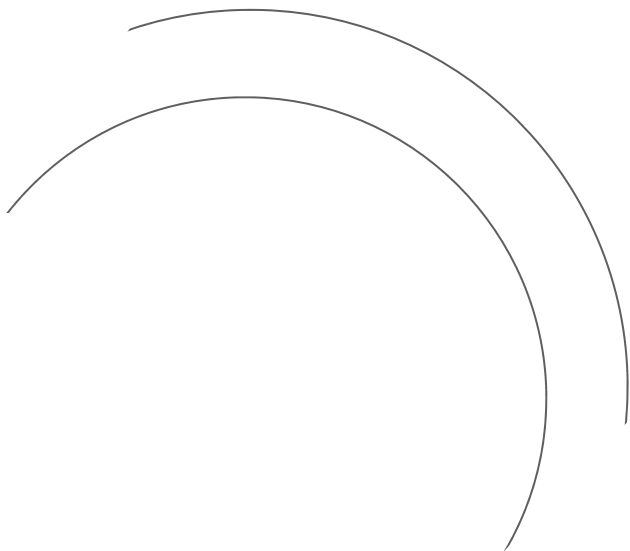
**Pyropanel Developments** Pty Ltd  
122-124 Beresford Rd, Lilydale, VIC, 3140  
Ph: (03) 9739 3100 Fax: (03) 9739 3115  
Email: sales@pyropanel.com.au  
Web: www.pyropanel.com.au

**Distributed by:**

## Availability

All Pyropanel products are available throughout Australia and various other countries through a network of licensed manufacturers and distributors. For a current contact list, please contact Pyropanel Developments or visit our website at [www.pyropanel.com.au](http://www.pyropanel.com.au).

[Pyropanel > Fire Doors > Smoke Doors > Life Safety Doors > Fire Rated Glazing > Passive Products > Special Purpose Doors](#)



PYROPANEL  
DEVELOPMENTS PTY LTD

Melba Industrial Park  
122-124 Beresford Rd  
Lilydale (P O Box 559)  
Victoria, 3140, Australia

T +61 3 9739 3100  
F +61 3 9739 3115  
E [sales@pyropanel.com.au](mailto:sales@pyropanel.com.au)  
W [www.pyropanel.com.au](http://www.pyropanel.com.au)



# FIRE RATED ACCESS PANEL

## 1hr fire rated wall access panel

TECH SHEET: PANEL-01

Issue: 03-05-2011

**Hinged or screw fixed wall access panel with 1 hr fire rating**

### DESCRIPTION

Hinged or screw fixed wall access panel suitable for installation in masonry or stud walls with a pressed metal frame or T-section frame, with a -/60/60 fire rating.

### APPLICATIONS

Shops, offices, apartments and any application where access needs to be achieved through a fire rated wall.

### FEATURES

- Fully insulated for 60 minutes
- MDF, ply or steel facing available
- Suitable for masonry, concrete or plaster walls
- Screw fixed at 500mm centres on all sides, or hinged with budget locks at 500mm centres on lock side.
- 38mm or 48mm thick
- Medium and hot temperature smoke seals, fire seals, and acoustic seals available
- Standard 4 sided pressed metal door frame with 25mm doorstops available in a variety of profiles (see *fire rated frame profiles*), or
- T-Section frame available (screw fix only) comprised of 2 welded 25mm x 25mm x 3mm steel angles
- Single leaf configurations only
- Recommended hinge configuration:
  - up to 2040 x 920 = 3 hinges.
  - up to 2400 x 1000 = 4 hinges.

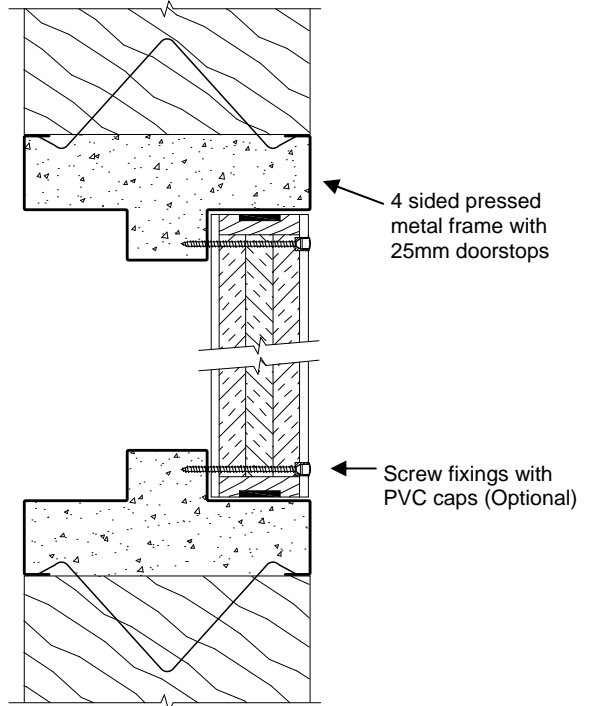
### MODELS

Model	FRL	Thickness (mm)	Max size (mm)
PWAP-60/60	-/60/60	48	2400 x 1000

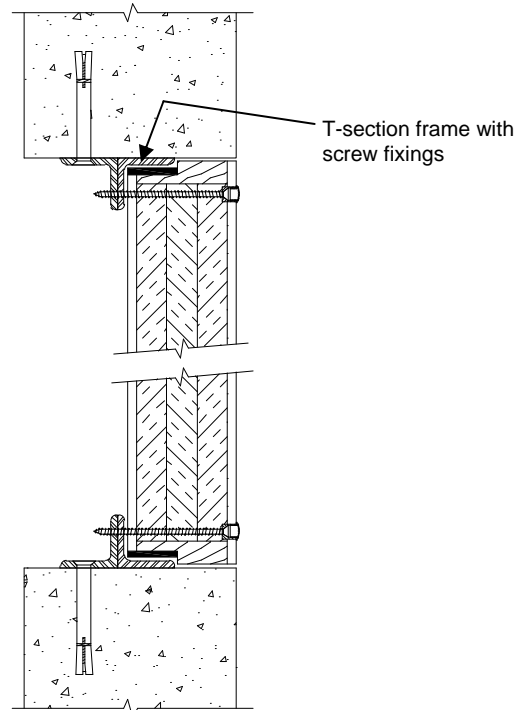
### HOW TO SPECIFY

"Eg. Access panel to be a Pyropanel fire rated wall access panel PWAP-60/60, 38 / 48mm thick\*, -/60/60, MDF face\*, with hinges and budget locks / screw fixings\*"

\* denotes example - delete, change or specify as required.



Wall panel with pressed metal door frame



Wall panel with T-Section frame



**Pyropanel Developments** Pty Ltd  
 122-124 Beresford Rd, Lilydale, VIC, 3140  
 Ph: (03) 9739 3100 Fax: (03) 9739 3115  
 Email: sales@pyropanel.com.au  
 Web: www.pyropanel.com.au

**Distributed by:**

# FIRE RATED ACCESS PANEL

## 2hr fire rated wall access panel

TECH SHEET: PANEL-02

Issue: 03-05-2011

**Hinged or screw fixed wall access panel with 2 hr fire rating**

### DESCRIPTION

Hinged or screw fixed wall access panel suitable for installation in masonry or stud walls with a pressed metal frame or T-section frame, with a -/120/60 fire rating.

### APPLICATIONS

Shops, offices, apartments, factories and any application where access needs to be achieved through a fire rated wall.

### FEATURES

- Fully insulated for 60 or 120 minutes,
- Ply or steel facing available
- Suitable for masonry, concrete or plaster walls
- Screw fixed at 500mm centres on all sides, or hinged with budget locks at 500mm centres on lock side.
- 48mm or 73mm thick
- Medium and hot temperature smoke seals, fire seals, and acoustic seals available
- Standard 4 sided pressed metal door frame with 25mm doorstops available in a variety of profiles (see *fire rated frame profiles*), or T-Section frame available (screw fix only) comprised of 2 welded 25mm x 25mm x 3mm steel angles
- Single leaf configurations only
- Recommended hinge configuration:
  - up to 2040 x 920 = 3 hinges.
  - up to 2400 x 1000 = 4 hinges.

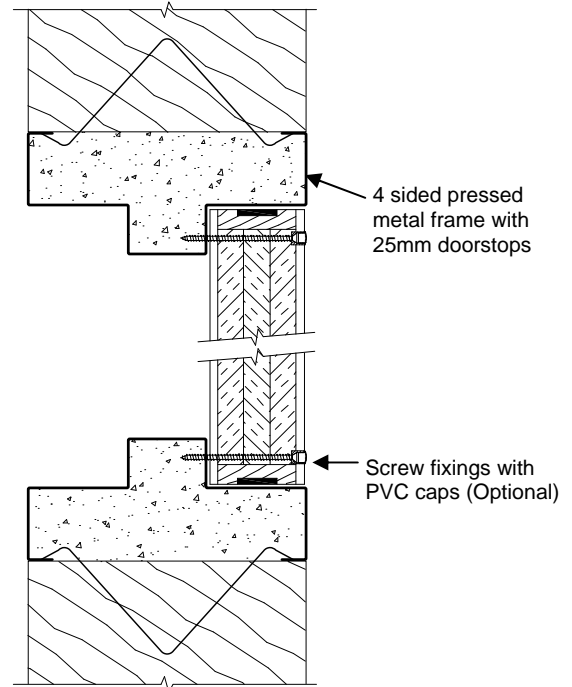
### MODELS

Model	FRL	Thickness (mm)	Max size (mm)
PWAP-120/60	-/120/60	48	2400 x 1000
PWAP-120/120	-/120/120	73	2400 x 1000

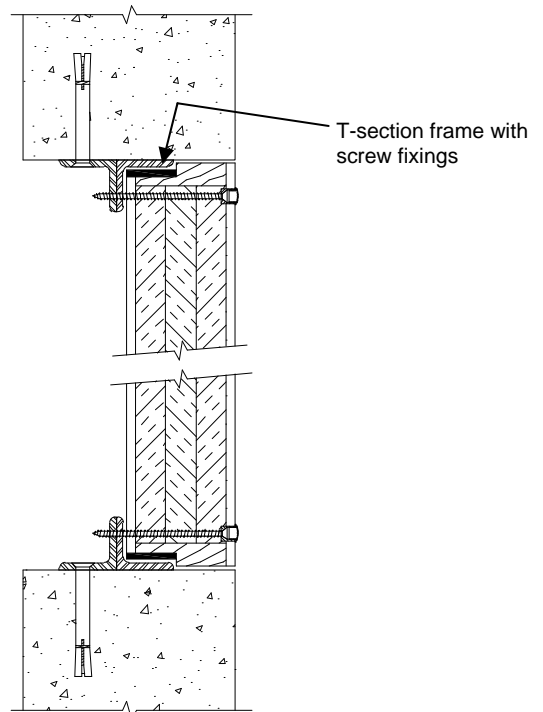
### HOW TO SPECIFY

"Eg. Access panel to be a Pyropanel fire rated wall access panel PWAP-120/60, 48mm thick\*, -/120/60, Ply face, with hinges and budget locks / screw fixings\*\*"

\* denotes example - delete, change or specify as required.



Wall panel with pressed metal door frame



Wall panel with T-Section frame



**Pyropanel Developments Pty Ltd**  
 122-124 Beresford Rd, Lilydale, VIC, 3140  
 Ph: (03) 9739 3100 Fax: (03) 9739 3115  
 Email: sales@pyropanel.com.au  
 Web: www.pyropanel.com.au

**Distributed by:**

# FIRE RATED ACCESS PANEL

## 4hr fire rated wall access panel

TECH SHEET: PANEL-03

Issue: 03-05-2011

**Hinged or screw fixed wall access panel with 4 hr fire rating**

### DESCRIPTION

Hinged or screw fixed wall access panel suitable for installation in masonry walls with a pressed metal frame or T-section frame, with a -/240/60 or -/240/120 fire rating.

### APPLICATIONS

Shops, offices, apartments, factories and any application where access needs to be achieved through a fire rated wall.

### FEATURES

- Insulated for 60 or 120 minutes
- Ply or steel facing available
- Suitable for masonry, concrete or plaster walls
- Screw fixed at 500mm centres on all sides, or hinged with budget locks at 500mm centres on lock side.
- 48mm or 73mm thick
- Medium and hot temperature smoke seals, fire seals, and acoustic seals available
- Standard 4 sided pressed metal door frame with 25mm doorstops available in a variety of profiles (see *fire rated frame profiles*), or
- T-Section frame available (screw fix only) comprised of 2 welded 25mm x 25mm x 3mm steel angles
- Single leaf configurations only
- Recommended hinge configuration:
  - up to 2040 x 600 = 3 hinges.
  - up to 2200 x 600 = 4 hinges.

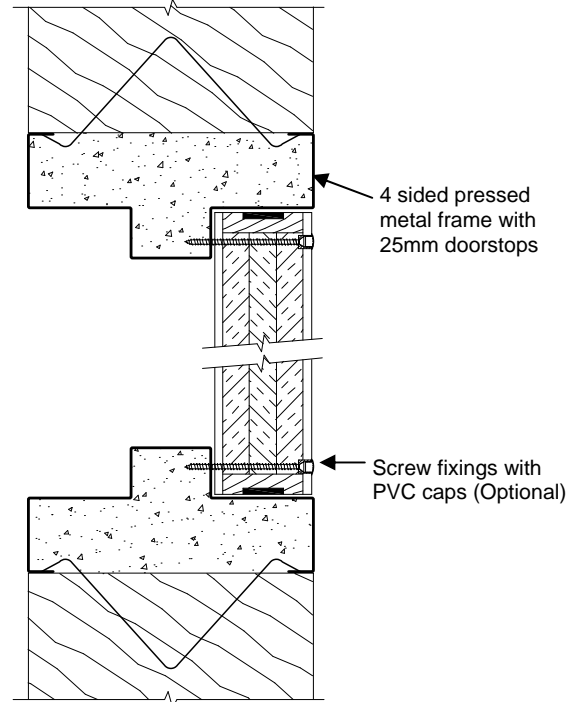
### MODELS

Model	FRL	Thickness (mm)	Max size (mm)
PWAP-240/60	-/240/60	48	2200 x 600
PWAP-240/120	-/240/120	73	2200 x 600

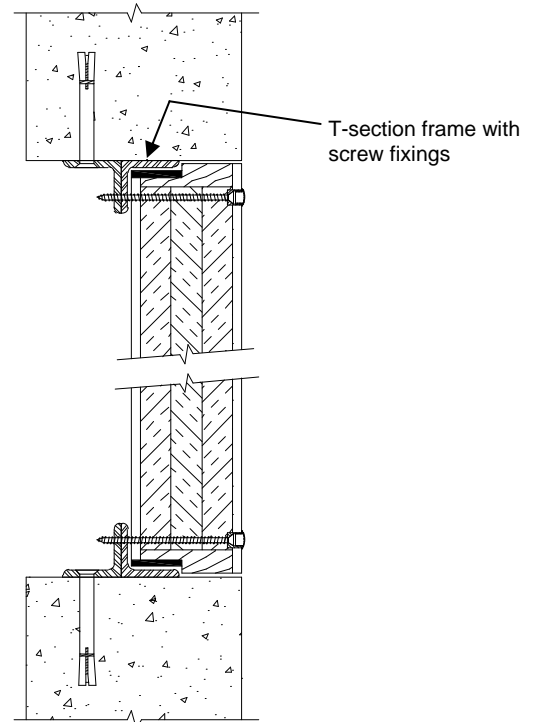
### HOW TO SPECIFY

"Eg. Access panel to be a Pyropanel fire rated wall access panel PWAP-240/60, 48mm thick, -/240/60, Ply face, with hinges and budget locks / screw fixings"

\* denotes example - delete, change or specify as required.



Wall panel with pressed metal door frame



Wall panel with T-Section frame

**PYRO PANEL**  
Protecting Life & Property

**Pyropanel Developments** Pty Ltd  
122-124 Beresford Rd, Lilydale, VIC, 3140  
Ph: (03) 9739 3100 Fax: (03) 9739 3115  
Email: sales@pyropanel.com.au  
Web: www.pyropanel.com.au

**Distributed by:**

# FIRE RATED ACCESS PANEL

## Lift shaft wall access panel

TECH SHEET: PANEL-04

Issue: 03-08-2010

**Fire rated access panel for lift shaft walls**

### DESCRIPTION

Specially designed access panel for gypsum cavity wall shafts around lift walls. Panel can be screw fixed or hinged with budget locks.

### APPLICATIONS

Gypsum (plaster) lift shaft liner walls (eg, Australian Gypsum Ltd cavity wall shaft, Boral Ltd lift wall system, etc).

### FEATURES

- Ply or steel facing available
- Suitable for gypsum cavity wall shafts (eg, Australian Gypsum cavity wall shaft, Boral Ltd lift wall system, etc)
- Screw fixed at 500mm centres on all sides, or hinged with budget locks at 500mm centres on lock side.
- 48mm thick
- Medium and hot temperature smoke seals, fire seals, and acoustic seals available
- Special 4 sided pressed metal door frame
- Single leaf configurations only

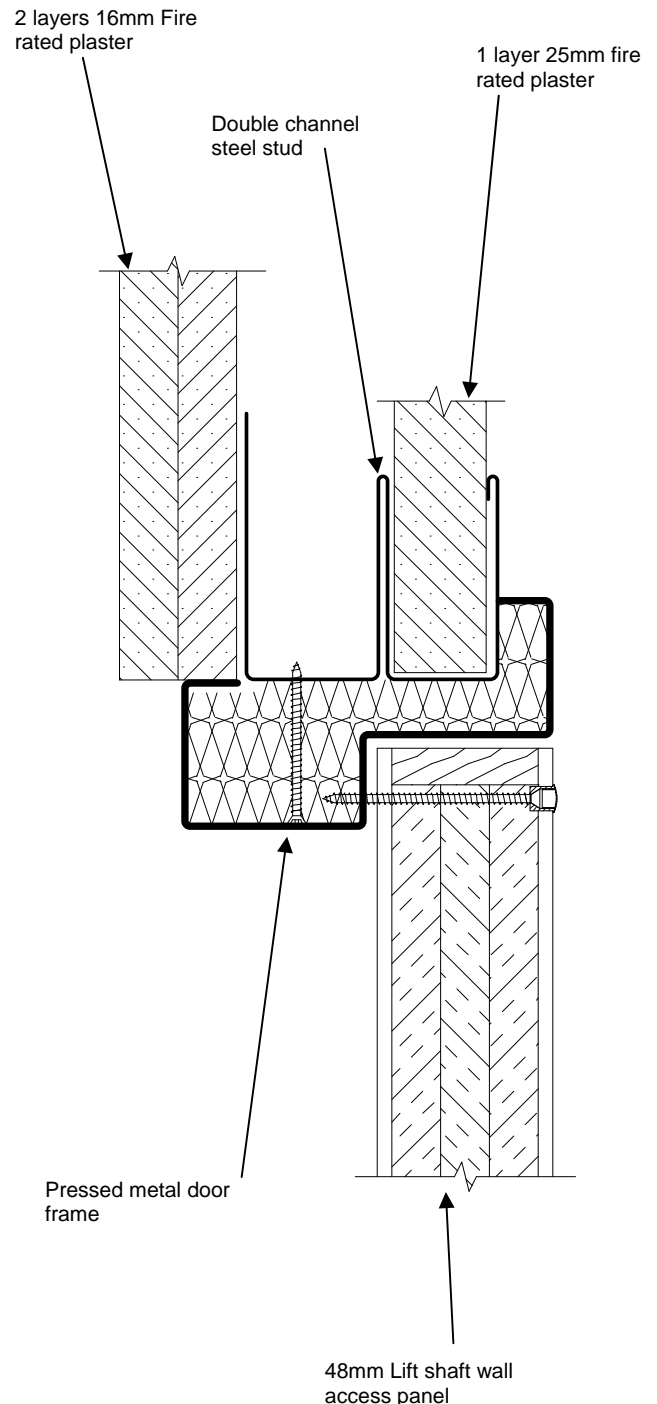
### MODELS

Model	FRL	Thickness (mm)	Max size (mm)
PLWAP-90/60	-/90/60	48	1570 x 470

### HOW TO SPECIFY

*"Eg. Lift shaft wall access panel to be a Pyropanel fire rated lift shaft wall access panel PLWAP-90/60, 48mm thick, FRL -/90/60, Ply face, with screw fixings\*"*

\* denotes example - delete, change or specify as required.



# FIRE RATED ACCESS PANEL

## 1hr fire rated plasterboard ceiling access panel

TECH SHEET: PANEL-05

Issue: 08-09-06

**Hinged access panel suitable for plaster board ceilings**

### DESCRIPTION

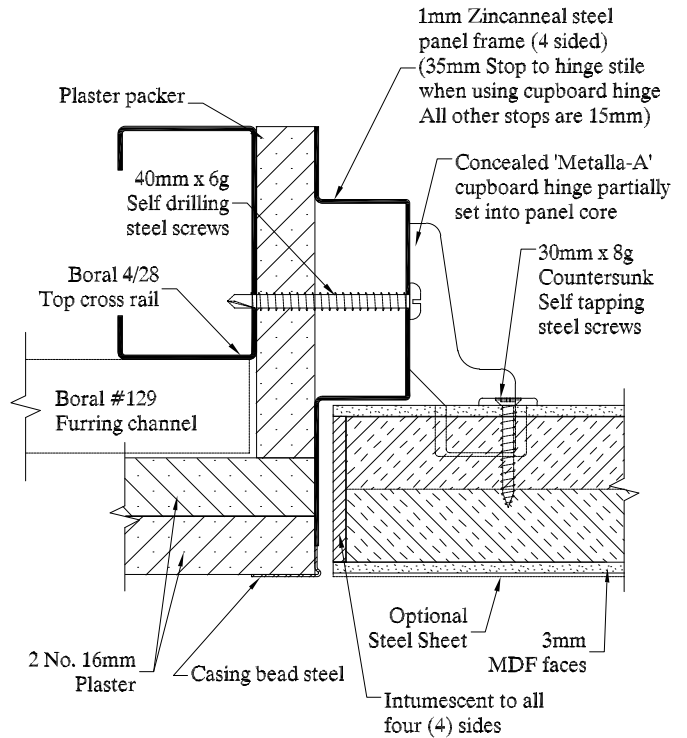
Hinged access panel installed into a steel framed plasterboard ceiling with a -/60/60 fire rating.

### APPLICATIONS

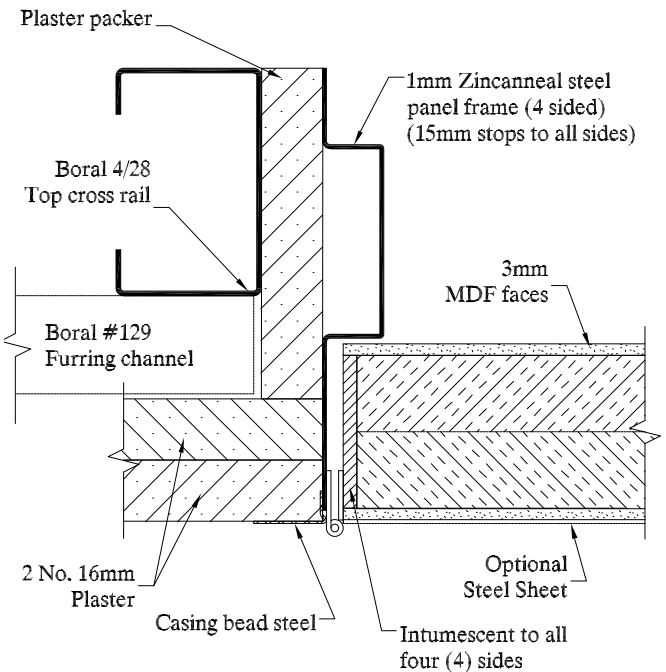
Shops, offices, apartments and any application where access needs to be achieved through a plaster lined ceiling without effecting the fire rating of the ceiling

### FEATURES

- Flush mounted or recess mounted
- 'Metalla-A' concealed cupboard hinges with 35mm frame rebate on hinge side, and 15mm frame rebate for remaining 3 sides, or
- Continuous 15 x 15 x 1.2 mm steel piano hinge with 15mm frame rebate on all 4 sides
- MDF facing as standard, or optional steel facing available
- Latched with either Bowman's cam-action or Budget lock
- 48mm thick
- Integrated hot temperature smoke / fire seals



**Ceiling panel with cupboard hinges**



**Ceiling panel with continuous hinges**

### MODELS

Model	FRL	Thickness	Max size
PCAP-CPS03	-/60/60	48	600 x 600

### HOW TO SPECIFY

"Eg. Access panel to be a Pyropanel fire rated plasterboard ceiling access panel PCAP-CPS03, -/60/60, MDF face\*, with a Budget lock\* and Metalla-A concealed cupboard hinges\*".

\* denotes example - delete, change or specify as required.



**Pyropanel Developments Pty Ltd**  
 122-124 Beresford Rd, Lilydale, VIC, 3140  
 Ph: (03) 9739 3100 Fax: (03) 9739 3115  
 Email: sales@pyropanel.com.au  
 Web: www.pyropanel.com.au

**Distributed by:**

# FIRE RATED ACCESS PANEL

TECH SHEET: PANEL-06

Issue: 08-09-06

## Lift motor room hatch / floor access panel

**Screw fixed or hinged floor access panel with checker plate cover and 4 sided steel frame**

### DESCRIPTION

Specifically designed for lift motor room and plant room hatches, these units are manufactured to size and incorporate a steel checker plate cover, and a special four sided pressed metal frame which is suitable for casting into concrete floors.

### APPLICATIONS

Lift shafts, motor rooms, plant rooms, or any application that requires access through a fire rated concrete floor.

### FEATURES

- Anodised aluminium or steel channel edges to four edges
- Ply or steel faced
- 48mm thick
- Screw fixed, masonry anchors or hinged
- Recessed finger grips provided
- Finger holes provide in checker plate steel cover
- NOTE: panels are non structural and must not have any load directly applied - steel checker plate is mandatory where there is any risk of load (including people) being applied
- Integrated hot smoke / fire seals included
- Medium temperature smoke seals available
- Singles or pairs with removable mullion
- Deletion of checker plate will reduce insulation value to 60 minutes

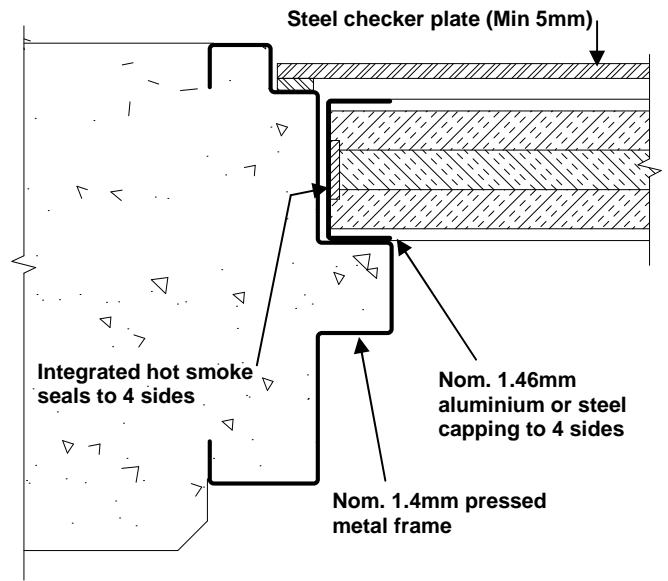
### MODELS

Model	FRL	Thick-ness	Max size single panel	Max size per panel for pairs
PFAP-240/120	-/240/120	48	1700 x 500	N/A
PFAP-120/120	-/120/120	48	1275 x 850	1275 x 850

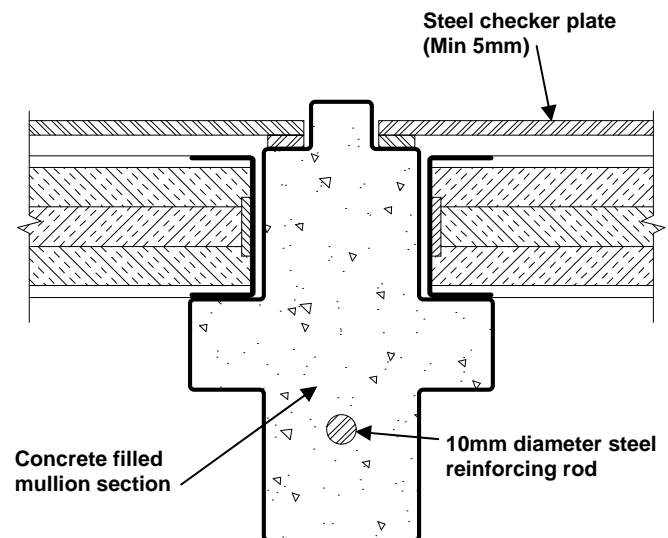
### HOW TO SPECIFY

"Eg. Access panel to be a Pyropanel fire rated floor access panel PFAP-240/120, FRL -/240/120, Ply face\*, with a hinges / screw fixings\*.

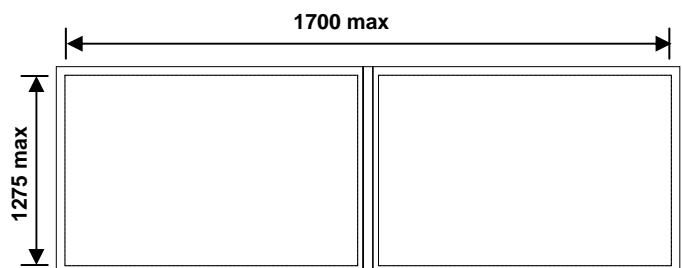
\* denotes example - delete, change or specify as required.



Elevation of edge detail



Elevation of removable mullion detail



Plan view of pair floor panel with removable mullion



**Pyropanel Developments** Pty Ltd  
 122-124 Beresford Rd, Lilydale, VIC, 3140  
 Ph: (03) 9739 3100 Fax: (03) 9739 3115  
 Email: sales@pyropanel.com.au  
 Web: www.pyropanel.com.au

**Distributed by:**